

NEWSLETTER

Summer 2012

APM — The Organization for Consultation and Liaison Psychiatry

President's MESSAGE

—Donald L. Rosenstein, MD, FAPM



I am very pleased to report that the Academy of Psychosomatic Medicine is in very solid shape. Our membership is growing (particularly among early career psychiatrists). We are financially healthy and thoughtful about how we direct our resources. Academy committees and special interest groups are populated with bright, creative, and remarkably hard-working members. Our journal, *Psychosomatics*, is superb and widely read. Perhaps most importantly, we are poised to host yet another truly outstanding Annual Meeting (2012 theme: "Bioethics at the Interface of Psychiatry and Medicine").

There are two main messages I want to convey in this newsletter: first, to say thank you to the dozens of Academy members

who volunteer countless hours working on behalf of the APM. Your dedication, scholarship, and contributions to our field are impressive and translate directly into tangible benefits for our members, colleagues, and patients. Second, please attend the Annual Meeting this November in the Buckhead area of Atlanta and bring your trainees, colleagues, children, parents, and bridge partners. I'm quite confident that you will have a fantastic time!

Linda Ganzini, MD, MPH, FAPM and the small army that constitutes our Annual Meeting Committee have constructed a meeting that is broad, deep, and relevant to your day-to-day work. We will have three world-class plenary speakers: **Laura Roberts, MD, FAPM** from Stanford University; **Ezekiel Emanuel, MD, PhD** from the University of Pennsylvania; and **Carolyn Mazure, PhD** from Yale University. Each will bring an authoritative and stimulating perspective to our meeting. Please see Linda's letter (at right) for more details about what we have in store.

In May, the APM leadership met in Philadelphia for a highly productive mid-year Council meeting. The Academy began this practice a few years ago and it has proved to be just the right mechanism for our organization to stay focused on key strategic priorities and maintain momentum. Major ongoing initiatives for the Academy include: an electronic survey to better understand and meet the needs of our membership (I encourage each of you to fill out this brief questionnaire, see page 14); the development of a communications plan so that the APM can clearly and effectively message who we are and what we do during this critical time of health care reform; enhancing our website to provide our membership with an interactive IT platform that facilitates PM CME programs (recertification, board review symposia, webinars, etc.) and communication between members; restructuring of the APM committee appointment process to improve how our committees operate between annual meetings; and planning psychosomatic medicine-related presentations at the APA meeting.

I would also like to highlight the important work being done by the Foundation of the Academy of Psychosomatic Medicine (fAPM). This new foundation is taking root, matur-

(continued on page 2)

Annual Meeting NEWS

APM 59th Annual Meeting in Atlanta

"Bioethics at the Interface of Psychiatry and Medicine"

—Linda Ganzini, MD, MPH, FAPM
2012 Scientific Program Chair

The 2012 APM Annual Meeting continues to take shape as we maintain many popular events and devise new offerings. The number of abstract submissions overall jumped by 11% this year, following a similar increase last year. There was substantial growth especially in the number of workshops and symposia submitted and, for this reason, we have included two new evening sessions, on Wednesday and Friday. Due to the anticipated size of the meeting, we have extended out from the Buckhead Intercontinental to the Buckhead Westin, a short walk away, where our poster session, welcoming reception, and Foundation auction will be held this year. Please don't feel that you need to attend ev-

(continued on page 3)

Issue HIGHLIGHTS:

- ⊙ Program Schedule for the 2012 Annual Meeting in Atlanta
- ⊙ Important Information for Presenters
- ⊙ Maintenance of Certification, the self-assessment component, and help from the 2012 Annual Meeting

In this ISSUE:

- ⊙ President's Message 1,2
- ⊙ 2012 Annual Meeting
 - From the Meeting Chair 1,3
 - Early Bird Discount 2
 - Hotel Reservations 2
 - Centennial Park Tour 3
 - Annual Meeting Committee 3
 - Pre-conference Courses 4
 - 2012 Travel Awards 4
 - Stoudemire Award 5
 - Preliminary Program 6-9
 - Annual Business Meeting 9
 - Early Career Events 10
 - First-Time Attendance 11
 - Important Deadlines 11
 - Registration Form 15
- ⊙ For Presenters
 - Unforgettable Presentations 10
 - MOC Questions 13
 - A/V in Your PowerPoint 13
- ⊙ About Atlanta
 - Gone with the Wind 4
 - Buckhead District 5
 - Coca-Cola 10
 - Cuisine 11
- ⊙ New APM Members 5
- ⊙ Maintenance of Certification 12
 - Initial Certification & Recertification 13
- ⊙ Committee, SIG, & Affiliate News
 - Cleveland C-L Society 14
 - Medicine & Psychiatry SIG 14
 - Clinical Care SIG 14
 - Membership Committee 14
- ⊙ fAPM News 16

President's Message (cont. from page 1)

ing and already enhancing the work of the Academy in several ways. Please support the fAPM and keep an eye out for their sponsored events at the Annual Meeting.

This is an exciting and particularly important moment in history for psychosomatic medicine and the APM. Over the next few years, there will be multiple opportunities for us to shape the delivery of medical care to millions of Americans who suffer from comorbid medical and psychiatric illnesses. This year's Annual Meeting is designed to be forward-thinking, innovative, and relevant to early career psychiatrists. We will have a rich offering of sessions on both the psychiatric care of medically ill patients and the provision of medical care for chronically ill psychiatric patients.

I hope to see you in Atlanta.

SAVE WITH THE EARLY BIRD BY AUGUST 15

Pre-register for the Annual Meeting by August 15, 2012 and enjoy a \$150 discount on the meeting registration fee. You may register online with a credit card or by mail or fax with a credit card, check, or money order. We encourage you to use the online system, as this saves considerable staff time and assures accuracy of your data in the registration system.

The link to the online registration system is in the Members' Corner. To register by mail or fax, use the Registration Form on page 15 of this Newsletter or the PDF of the form on the website. There will be no admittance without payment, and reg-

istration forms will not be processed until payment is received.

The online registration system will close October 29. Registration forms postmarked after October 29 will be treated as on-site registrations. Because some materials for on-site registrants cannot be prepared in advance, delays at the Registration Desk are possible. We suggest that you pre-register by August 15 to minimize delays and earn the early-bird discount.



BOOK YOUR ROOM BY OCTOBER 22 *at the InterContinental Buckhead*

Our host hotel for the APM 2012 Annual Meeting, the InterContinental Buckhead, combines southern hospitality and international flair. It is a non-smoking hotel with 22 floors, 422 guest rooms, 21 suites, a first-class restaurant and bar. The hotel is located just north of downtown Atlanta in the Buckhead district, within walking distance of several shopping malls, boutiques, and dining places.

We encourage you to make your hotel reservations early, while rooms are still available, to ensure your accommodations are at the same hotel as the meeting. The discounted room rate for attendees of the meeting is \$150, which includes high-speed Internet in sleeping rooms and complimentary access to the hotel's fitness center. Children under 12 stay for free.

Reserve online with the link in the Annual Meeting section of the APM website, or call 877-422-8254 and mention you are attending the APM Annual Meeting to reserve your room at the **discounted rate, which expires October 22, 2012.**

Due to the tremendous growth in our program, the Academy has booked a secondary hotel to host the Thursday Poster Session and Welcome Reception. The Thursday evening events will be held at the Westin Buckhead, located 3 blocks from the InterContinental—a short walk.

Transportation

The InterContinental Buckhead is 17 miles north of Hartsfield Jackson International Airport (ATL). Taxi from the airport to the hotel is about \$41 and takes 30 minutes. Public transportation from/to the airport is also available for less than \$5, with the Buckhead Marta station a block from the hotel.

InterContinental Buckhead
3315 Peachtree Rd NE, Atlanta, Georgia 30326
1-877-422-8254

Westin Buckhead
3391 Peachtree Rd NE, Atlanta, Georgia 30326
1-800-937-8461

ery session—our local events subcommittee has put together several outings for members and their families and the shopping in Buckhead is apparently fantastic. In addition, this area of Atlanta is known for its restaurants and local APM members, **Ann Schwartz, MD** and **Wendy Baer, MD**, have put together an amazing list. These two will also help you work off the indul-



Atlanta's Centennial Olympic Park, destination of a Thursday afternoon or Friday morning special APM bus.

CENTENNIAL OLYMPIC PARK TOUR

Thursday, Nov. 14, 1:00pm–5:00pm
or
Friday, Nov. 16, 9:00am–1:00pm
(\$35/person)

Home of the 1996 Centennial Olympic Games and the world's largest Olympic Ring fountain, Centennial Olympic Park provides year-round entertainment including concerts, festivals, and family activities. Atlanta's Centennial Olympic Park features family fun and live music many days of the week. "Music at Noon" presents local bands performing mid-day, and "Wednesday Wind Down" features jazz during rush hour. The "Fountain of Rings" displays a dancing water show harmonized with pop music, lights, and sound effects. Downtown Atlanta, Georgia's walkable attractions loop, is where you can see the World of Coca-Cola, Georgia Aquarium, Inside CNN Atlanta, and Imagine It! (the Children's Museum of Atlanta), all circling Centennial Olympic Park. For just \$35, the Academy will be providing express bus transportation to Centennial Park to allow you time to visit these great attractions.

gences with a 6:00AM run departing from the hotel each morning.

We have several program tracks this year including ethics, early career, integrated practice, clinical practice, research, lifespan, and teaching and training. Consistent with our meeting theme, "Bioethics at the Interface of Psychiatry and Medicine," many APM members submitted intriguing ethical conundrums, or incorporated ethical perspectives into symposia on other topics.

With the success of our psychosomatic medicine fellowships, we have a growing cadre of early career psychiatrists (psychiatrists within five years of training) with enormous variety in their work lives. We are offering several new sources of support this year. On Saturday, we will hold a trainee/early career luncheon, supported in part by APM, in which a small group can meet with a senior psychiatrist or senior researcher for career consultation. We will also offer career consultation by appointment for this group throughout the meeting. The Early Career Subcommittee, chaired by **Divy Ravindranath, MD**, has developed a first-time attendee brochure to guide new attendees in getting the most out of our increasingly complex meeting. We will continue to sponsor the early career/trainee mixer on Wednesday, and Divy and his subcommittee are organizing a casual evening out on Friday. Special events for the trainee/early career audience are also listed on page 10.

This year we are pleased to welcome members of the psychiatry-primary care affinity group, which includes psychiatrists in the community who increasingly take on integrated medical care of patients with severe mental illness. A two-day track (Wednesday and Thursday) with a special rate is offered for them.

Our successful pre-conference courses are back with a full-day *Updates in Psychosomatic Medicine* course, and eight additional half-day courses on Wednesday (listed on page 4).

Thanks to the many APM Program Committee members who have helped put together this extraordinary meeting.

ANNUAL MEETING COMMITTEE 2012

Chair: Linda K. Ganzini, MD, FAPM
Vice Chair: James R. Rundell, MD, FAPM
CME Liaison: Thomas W. Heinrich, MD,
FAPM (Medical College of Wisconsin)

Pre-conference Courses:

Co-chairs: Philip A. Bialer, MD, FAPM
Maryland Pao, MD, FAPM

Mary Jo Fitz-Gerald, MD
James L. Levenson, MD, FAPM
Jose R. Maldonado, MD, FAPM
Lisa J. Rosenthal, MD
Theodore A. Stern, MD, FAPM
Linda L.M. Worley, MD, FAPM

Early Career Track:

Co-chairs: Patrick Aquino, MD
Divy Ravindranath, MD

Rashi Aggarwal, MD
Rebecca W. Brendel, MD, JD, FAPM
Jason P. Caplan, MD, FAPM
Laura K. Kent, MD

Workshops & Symposia:

Co-chairs: J. M. Bostwick, MD, FAPM
Christopher L. Sola, DO, FAPM

Khyati Brahmabhatt, MD
Marc D. Feldman, MD
Thomas W. Heinrich, MD, FAPM
Manuel N. Pacheco, MD, FAPM
Sanjeev Sockalingam, MD

Oral & Poster Papers:

Co-chairs: Jon Levenson, MD, FAPM
Christina Wichman, DO

Jason P. Caplan, MD, FAPM
M. Beatriz Currier, MD, FAPM
Lucy Epstein, MD
Mary Jo Fitz-Gerald, MD
Oliver Freudenreich, MD, FAPM
Rita R. Hargrave, MD
Laura K. Kent, MD
Karen M. Lommel, DO
Roberto Jorge Ortiz-Aguayo, MD
Muhamad Aly Rifai, MD, FAPM
Lisa Seyfried, MD

Local Arrangements:

Co-chairs: Nehama Dresner, MD, FAPM
Ann C. Schwartz, MD

Wendy M. Baer, MD
Mallika Lavakumar, MD
Divy Ravindranath, MD

9 PRE-CONFERENCES COURSES TO CHOOSE FROM THIS YEAR

The Annual Meeting Committee, with the support of the APM Council, has expanded the pre-conference courses program to meet the increasing popularity of the courses and the increasing demand for high-level educational opportunities. We opened up the submission process for the advanced skills courses this year, bringing us some highly competitive proposals. The Pre-Conference Courses Subcommittee worked diligently to put together a truly comprehensive, innovative, and exciting program.

“Updates” Course

The very popular, annual *Updates in Psychosomatic Medicine* will be a full-day (8-hour) course this year to help attendees prepare for the board exam in April 2013. Rather than broad overviews, the lectures this year will provide updates on more specific areas of interest in Psychosomatic Medicine. The following topics will be presented:

- Delirium — José Maldonado, MD, FAPM

- Psychopharmacology of the Medically Ill — Steven Ferrando, MD, FAPM
- Psycho-oncology / Palliative Care — John Shuster, MD, FAPM
- Psychoendocrinology — Linda Worley, MD, FAPM
- Women’s Health — Christina Wichman, DO
- Neurology for the PM Psychiatrist — Jason Caplan, MD, FAPM
- Psychotherapy of the Medically Ill — Harold Bronheim, MD, FAPM
- Transplant Psychiatry — Andrea DiMartini, MD, FAPM

Eight “Skills” Courses

Running concurrently with the “Updates” course will be eight intensive, interactive half-day (4-hour) Advanced Skills courses.

Morning Skills Courses (8:00am to Noon):

- *Legal and Risk Management Issues in Psychosomatic Medicine: Practical Approaches*
- *Writing for Publication: Strategies for Success*

- *Perinatal Psychiatry Update*
- *The Integration of Primary Care and Behavioral Health: Practical Skills for the Consulting Psychiatrist*

Afternoon Skills Courses (1:00 to 5:00pm):

- *Delirium Update: Novel Perspectives on Etiology, Diagnosis, Prevention, Treatment and Long-Term Outcomes*
- *Internal Medicine Update for the Consultation-Liaison Psychiatrist*
- *Telepsychiatry in Psychosomatic Medicine: New Opportunities for Patient Care, Teaching, and Research*
- *Psychotherapy in the Medically Ill: Skills for the Bedside and Beyond*

In addition to providing exciting and valuable educational experiences for our membership, we have been working with the Maintenance of Certification (MOC) Subcommittee to ensure that participants in these courses will be able to obtain documentation that will satisfy MOC requirements for Psychosomatic Medicine re-certification. Please see Dr. Boland’s MOC article on page 12.

“Frankly, my dear, I don’t give a . . .”

Just last year, Atlanta celebrated the 75th anniversary of the 1936 publication of *Gone With The Wind* (GWTW), which was author Margaret Mitchell’s only published manuscript. She began working as a journalist for the *Atlanta Journal Sunday Magazine* in 1922. Four years later, while recuperating from a broken ankle, she began writing her masterpiece, starting with the final chapter! She completed the majority of the book in three years, but did not seek publication until an editor for Macmillan requested to read it in April of 1935. By July, she had a contract, a \$500 advance, and a guarantee of 10% of the royalties. GWTW has been translated into 27 languages and still sells approximately 250,000 copies per year.

The movie rights were sold to David Selznick for \$50,000—the most ever paid for a manuscript at that time. The 1939 movie took 3½ years to make; movies were usually only a few months in the making in those days.



The Margaret Mitchell House, which is operated by the Atlanta History Center and is on the National Register of Historic Places, has guided tours daily, 10:30am to 4:30pm. See the apartment where she wrote GWTW, an exhibition showcasing her life, and a gift shop. The Margaret Mitchell House is about 20 minutes from our host hotel via Atlanta’s Marta subway system.

www.margaretmitchellhouse.com

2012 TRAVEL AWARDS

As an incentive for residents and PM fellowship trainees to attend the 2012 Annual Meeting and eventually become the future leaders of the Academy, the APM will again award \$750 to each of 13 trainee meeting registrants to offset the cost of travel and accommodations at the meeting.

To apply for the award, a trainee must submit the Trainee Travel Award application by **August 1, 2012**. The application must be accompanied by 1) a letter from your home institution commenting on availability of funding from the home institution; 2) an essay, of no more than 500 words, explaining your interest and future plans in psychosomatic medicine (note that if you submitted an abstract for the 2012 Annual Meeting, please include the abstract’s title); and 3) a letter of recommendation from your C-L Chief or C-L Fellowship Director.

The application and how to apply is on the web at www.apm.org/awards/trainee-travel.shtml

New

MEMBERS

Thor Agustsson, DO Jefferson, LA	Rebecca Hedrick, MD Orange, CA	Lindsey Mortenson, MD Ann Arbor, MI	Sandra Rackley, MD Washington, DC	Erin Sterenson, MD Rochester, MN
Faizi Ahmed, MD Philadelphia, PA	Filza Hussain, MBBS New York, NY	Shah Nawaz, MD Newtown, CT	Yelizaveta Sher, MD San Bruno, CA	Alexander Thompson, MD Seattle, WA
Amritha Bhat, MD San Diego, CA	Jamie Hutchinson, MD Belle Chasse, LA	Mark Newman, MD Ann Arbor, MI	Jack Shier, MD Tucson, AZ	Agnes Wrobel, MD Troy, MI
Kristi Estabrook, MD Milwaukee, WI	Noor Jarun, DO Houston, TX	Lorenzo Norris, MD Arlington, VA	Kristen Shirey, MD Durham, NC	Yelena Zack, MD Astoria, NY
Sheryl Fleisch, MD Pittsburgh, PA	Christina Kitt, MD New York, NY	Anne O 'Melia, MD Mason, OH	Fauzia Shujaat, MD San Francisco, CA	Adnan Zawawi, MD Mount Joy, PA
Gary Gala, MD Chapel Hill, NC	Kimberly Klipstein, MD New York, NY	Nadia Quijije, MD Tampa, FL	Francois Sirois, MD, PhD Quebec City, QC, Canada	
Jonny Gerkin, MD Chapel Hill, NC	Jennifer Kruse, MD Santa Monica, CA	Virgen Quinones- Fernandini, MD, Mayaguez, Puerto Rico	William Sledge, MD Hamden, CT	
Allison Hadley, MD San Diego, CA	Rachel Lynn, MD Pasadena, CA			



Association of Medicine & Psychiatry CME Meeting

September 28-29, 2012
Chicago, Illinois

**"The Interface Between Medicine
and Psychiatry"**

www.assocmedpsych.org

SUE STOUDEMIRE WILL PRESENT THE ALAN STOUDEMIRE AWARD

We are delighted that the widow of Dr. Alan B. Stoudemire, Sue, has agreed to present the award named in her husband's honor, the Alan Stoudemire Award for Innovation and Excellence in Psychosomatic Medicine Education. The Poster Session on Thursday evening will feature a poster by the recipient of this year's award, which will be presented by Mrs. Stoudemire during the awards luncheon on Friday.

Dr. Stoudemire was a highly respected clinician and educator and a prolific author and editor with "a wicked sense of humor" with colleagues and friends. He received the Academy's highest honor, the Thomas P. Hackett Memorial Award, in 1997. He passed away at age 49 in February 2000 of melanoma.

THE "BUCKHEAD" OF THE INTERCONTINENTAL BUCKHEAD

The site of this year's annual meeting is in the Buckhead district of Atlanta, hence the name of our host hotel and of the Westin Buckhead hotel for Thursday evening activities.

Buckhead is the third largest business district in Atlanta, with its core along Peachtree Road. Its shopping district has more than 1,400 retail shops and the highest concentration of upscale boutiques in the US. The *Robb Report* magazine has consistently ranked Buckhead as one of the nation's Top Ten Affluent Communities due to the "most beautiful mansions, best shopping

and finest restaurants in the Southeastern United States." Many of Atlanta's diplomatic missions are located in the Buckhead section including the Consulate General of Australia as well as the Australian Trade Commission, the Consulate-General of



France and the French Trade Commission, and the Consulates-General of Brazil, Japan and Greece. The surrounding suburban neighborhoods feature large single-family homes situated among dense forests and rolling hills.

Buckhead is home to Piedmont Hospital and the private, catastrophic-care hospital, Shepherd Center, which specializes in spinal cord injury and acquired brain injury. The two hospitals are adjacent to one another along Peachtree Road, which is known as "Cardiac Hill" by those who run in the annual July 4th Peachtree Road Race.

2012 Annual Meeting

PRELIMINARY PROGRAM SCHEDULE

This schedule, current as of July 1, 2012, highlights only the major events and is subject to change. The full schedule will be posed on the APM website and will be included in the Final Program booklet provided to registrants when they check in at the Registration Desk.

2012 Annual Meeting Learning Objectives:

At the end of this meeting participants should be able to:

- Describe the most recent research findings and clinical areas of interest in psychosomatic medicine.
- Analyze the different perspectives of psychosomatic medicine in diverse populations of patients across the lifespan.
- Understand concepts in integrated care and describe models using integrated care.
- Apply ethical principles to complex patient care issues.
- Improve ability to integrate research findings into patient care.

NOTE: Below, workshops and symposia are tagged [in square brackets] with one of eight program tracks::

- Clinical Care 1
- Clinical Care 2
- Early Career
- Ethics
- Integrated Practice
- Lifespan
- Research
- Teaching & Training

Wednesday, November 14

7:00am–7:00pm	Registration Desk open
8:00am–5:15pm	<i>Updates in Psychosomatic Medicine</i> Course (see page 4 for topics)
8:00am–Noon	Four Concurrent Skills Courses (see page 4 for course offerings)
Noon–1:00pm	Lunch on your own (optional \$25 buffet lunch for purchase)
1:00–5:00pm	First APM Council Meeting (Council members and invited guests)
1:00–5:00pm	Four Concurrent Skills Courses (see page 4 for course offerings)
3:00–5:00pm	Early exhibitor setup
5:00–6:00pm	<i>Psychosomatics</i> Editorial Board Meeting (by invitation)
5:00–6:00pm	Trainee & Early Career Mixer (trainee and early career registrants only)
5:00–6:30pm	APM Happy Hour
6:00–7:00pm	New Member Reception (by invitation)
7:00–9:00pm	C-L/PM Fellowship Directors' Forum (fellowship program directors and fellowship trainees)
7:00–9:00pm	Concurrent Synposia 1–3: S1: Toward Better Medical Care of the Mentally Ill: Three Models of Integrated Psychiatric and Medical Services [Integrated Practice] S2: Neuropsychiatry Updates [Clinical Care 1]

S3: Economic, Ethical, and Educational Challenges for Training in Psychosomatic Medicine: The Impact of Health Care Reform [Teaching and Training]

Thursday, November 15

6:00–7:00am	Neighborhood Run
6:30–7:00am	Mindfulness Meditation with Paul Jones, MD
6:30am–7:00pm	Registration Desk open
7:00–9:00am	Exhibitor setup
7:00–8:00am	APM Committee Meetings (and Continental breakfast)
8:00am–7:00pm	Exhibits open
8:00–8:30am	Annual Meeting Opening & Announcements
8:30–9:45am	OPENING PLENARY LECTURE — Laura Roberts, MD, FAPM
9:45–10:00am	Break
10:00am–Noon	Concurrent Workshops (W) and Symposia (S): W1: Integrated Care: Views and Perspectives from the Field [Integrated Practice] W2: Update and Review of Emergency Psychiatry: Overview of Project BETA (co-Sponsored by the APM Emergency Psychiatry SIG in collaboration with the American Association for Emergency Psychiatry) [Clinical Care 1]

	W3: Legal and Ethical Issues in Perinatal Psychiatry: A Case-Based Discussion [Lifespan]		S8: Death-Hastening Decisions and Psychiatric Consultations [Ethics]
	W4: A Critical Review of Recent Research Findings Relevant to Your Practice (co-Sponsored by APM Research Committee) [Research]		S9: Screening, Assessment, and Treatment of Depression and HIV-Associated Neurocognitive Disorders (HAND): A Discussion of the Evidence (co-sponsored by the APM HIV/AIDS SIG) [Research]
	W5: When Bad Things Happen to Good Early Career Psychiatrists [Early Career]	4:00–4:30pm	Break / Transition to Westin Buckhead Hotel
	W6: Rethinking Teaching: Solving Educational and Ethical Dilemmas Using Technology [Teaching and Training]	4:30–6:30pm	Poster Session (at the Westin Buckhead) <i>featuring the poster of Gary J. Gala, MD for his Stoudemire-awarded program at the University of North Carolina. The award will be presented by Dr. Stoudemire's widow, Sue, at the Award Luncheon on Friday.</i>
	W7: Appropriate Use of Benzodiazepines—What Should You Recommend? [Clinical Care 2]	6:00–8:30pm	Opening Welcome Reception (at the Westin Buckhead; 2 drink tickets, then cash bar)
	S4: Ethical Dilemmas in Psychosocial Evaluation for Organ Transplant Candidates with Psychiatric Comorbidities [Ethics]	7:15–8:30pm	fAPM Auction (at the Westin Buckhead)
Noon–3:00pm	Poster setup (for poster presenters)		
Noon–12:15pm	Break		
12:15–1:45pm	ANNUAL RESEARCH AWARD Lunch, Presentation, and Lecture — Scott Kim, MD, PhD		
1:00–5:00pm	Optional Centennial Olympic Park Tour (\$35)		
1:45–2:00pm	Break		
2:00–4:00pm	Concurrent Workshops (W) and Symposia (S)		
	W8: Parenthood and Psychosomatic Medicine: Navigating Two Demanding Positions [Early Career]		
	W9: Clinical Vignettes: The First Competency-Based Tool for Psychosomatic Medicine Fellowship Programs [Teaching and Training]		
	W10: Non-Pharmacological Treatment Alternatives in Psychosomatic Medicine [Clinical Care 2]		
	S1: Innovations in Psychotherapy for Medically Ill Patients		
	S5: Health Reform: National Organization-Based Psychiatric Initiatives in Integrated Care [Integrated Practice]		
	S6: Psychiatrist as Physician First: The Physical Examination in Psychosomatic Medicine [Clinical Care 1]		
	S7: Weight Matters: A Psychosomatic Perspective to Severe Obesity Management Across the Lifespan [Lifespan]		
		<hr/> Friday, November 16 <hr/>	
		6:00–7:00am	Neighborhood Run
		6:30am–7:00pm	Registration Desk open
		7:00–8:00am	APM Special Interest Group Meetings (and Continental breakfast)
		8:00–9:00am	APM Committee Meetings (and Continental breakfast)
		9:00am–5:00pm	Exhibits open
		9:00am–1:00pm	Optional Centennial Olympic Park Tour (\$35)
		9:00–9:15am	Break
		9:15–9:30	Announcements
		9:30–10:15am	DLIN/FISCHER AWARD Presentation & Lecture
		10:15–10:30am	Break
		10:30am–12:30pm	Concurrent Oral Paper Sessions
		12:30–12:45pm	Break
		12:45–1:45pm	Awards/Fellowship Luncheon & Convocation
		1:45–2:30pm	ELEANOR & THOMAS P. HACKETT MEMORIAL AWARD Presentation, Introduction, and Lecture — James R. Rundell, MD, FAPM, introduced by J. Michael Bostwick, MD, FAPM
		2:30–2:45pm	Break

2:45–3:45pm	PLENARY LECTURE II — Ezekiel J. Emanuel, MD, PhD	DSM-V for Disorders Presenting Predominantly with Somatic Symptoms (Somatoform Disorders) [Research]
3:45–4:00pm	Break	
4:00–6:00pm	Concurrent Workshops (W) and Symposia (S) W11: The “Mash-Up”: Psychosomatic Medicine Meets Community Psychiatry in the Decade of Comprehensive Collaborative Care [Integrated Practice] W12: Ethical Issues in Pediatric Psychosomatic Medicine [Lifespan] W13: Practical Ethics of Symptom Management in Patients at High Risk for Misuse of Controlled Substances [Ethics] W14: Where Do They Belong: A Discussion of Transfers from Medicine to Psychiatry [Clinical Care 2]S5: Management of Delirium in the Context of Advanced or Life-Threatening Illness S11: Psychotropic Medications and QT Prolongation: What Do C-L Psychiatrists Need to Know? [Clinical Care 1] S12: Implementing Evidence-Based Psychotherapy in Primary Care [Research] S13: Limbic Lessons Learned from Fellowship [Early Career] S14: Improving Quality of Life by Addressing Sexual Health [Teaching and Training]S7: Research and Service Innovation: Making It Happen (APM Research Committee symposium)	
5:00–8:00pm	Exhibits breakdown	
6:00–7:15pm	Dinner on your own	
6:00–7:15pm	Webb Fellow Reception (by invitation)	
6:00–7:15pm	APM Happy Hour	
7:15–9:15pm	Concurrent Workshops (W) and Symposia (S) W15: “The patient lacks capacity. Now what?” Ethical and Legal Approaches to Autonomy and Substituted Judgment in the General Hospital [Ethics] W16: Proposed Guidelines for Medical Student and Residency Education in Psychosomatic Medicine [Teaching and Training]S9: Innovative Approaches to Clinical Care, Research, and Prevention in AIDS Psychiatry (APM AIDS Psychiatry SIG symposium) S14: Update in Eating Disorders: Special Populations and Unique Presentations [Lifespan] S15: From Beijing to Atlanta: Are We There Yet? The Long Journey from DSM-IV to	
		Saturday, November 17
		6:00–7:00am Neighborhood Run
		6:30am–6:30pm Registration Desk open
		7:00–8:00am APM Special Interest Group Meetings (and Continental Breakfast)
		8:00–9:00am APM Committee Meetings (and Continental breakfast)
		9:00–9:15am Break
		9:15–9:30am Announcements
		9:30–10:30am PLENARY LECTURE III —Carolyn Mazure, PhD
		10:30–10:45am Break
		10:45am–12:45pm Concurrent Workshops (W) and Symposia (S) W17: Research Strategies for Examining Ethical Issues in Psychosomatic Medicine [Research] W18: Preparation for the “Real World”: A Transition to Practice Workshop [Early Career] W19: “On A Phantom Limb” – A Cinematic Presentation of Patient Experience of Delirium [Clinical Care 2]S14: ICU Psychiatry: Approaches to Critical Care at Academic and Community-Based Hospitals S16: C-L Meets Hospital Administration: Financial Advantages of Clinical Care Initiatives [Integrated Practice] S17: Advances in Medical Care for Patients with Schizophrenia [Clinical Care 1] S18: Using Attachment Theory to Understand and Manage Illness Behavior: The University of Toronto Approach [Lifespan] S19: Coercion vs. Autonomy – Who Are The Winners? [Ethics] S20: An Update on Suicide Risk Assessment and Management in Three Settings – Emergency Department, Medical Floor, and in Preparation for Discharge [Teaching and Training]
		12:45–2:15pm Lunch on your own
		12:45–2:15pm SIG Chairs’ Lunch (invitation only)
		12:45–2:15pm Optional Trainee & Early Career Lunch (\$10) (trainee and early career registrants only)
		2:15–2:30pm Break

Annual Members'

BUSINESS MEETING

- 2:30–4:30pm Concurrent Workshops (W) and Symposium (S)
W20: Catatonia: Video Workshop on Recognition and Management [Clinical Care 1]
W21: The ABCs of Starting a Service: Administration, Business, and Change [Early Career]
W22: Should Psychosomatic Medicine Go the Way of General Medicine? The Experience of Integrating Psychosomatic Subspecialists with Fellowship Training by Embedding Them into Ambulatory Subspecialty Med/Surg Clinics [Teaching and Training]
S21: Understanding Medical Legal Tools and Strategies: The Key to Tax Reduction and Lawsuit Prevention [Integrated Practice]
S22: The XX Factor: Perinatal Psychiatry for Psychosomatic Medicine Psychiatrists [Lifespan]
S23: Neuropsychiatric, Psychodynamic, and Ethical Issues in the Immediate Posttransplant Period [Ethics]
S24: Overcoming the Obstacles to Delivering Integrated Health Care (co-sponsored by the APM Research Committee) [Research]
- 4:30–4:45pm Break
4:45–5:30pm APM Annual Business Meeting & fAPM Raffle Prize Drawing
5:30–6:30pm APM Annual Meeting Committee Wrap-up Session & Reception (by invitation)
5:30–7:00pm APM Happy Hour

Sunday, November 18

- 7:00–10:00am Registration Desk open
7:30–10:30am Second APM Council Meeting (Council and invited guests)

PRESENTERS

of Courses, Workshops, and Symposia:

Please submit your MOC questions by Monday, September 17, 2012.

For details, see page 13 and

www.apm.org/ann-mtg/2012

The 2012 Annual Members' Business Meeting is scheduled for Saturday, November 17, 2012, from 4:45 to 5:30 pm at the InterContinental Buckhead Hotel in Atlanta, Georgia.

Agenda items include the election of officers and councilors, ratification of a change to the By-Laws and, sponsored by the Foundation of the APM, a raffle drawing of something wonderful.

Election of Officers and Councilors:

The APM Nominating Committee (**Drs. Katon** [chair], **Currier, Sharpe and Shuster**) respectfully submits the following slate of officers and councilors for action at the Annual Members' Business Meeting in Atlanta, GA in November.

Officers (1-year terms):

President-Elect: Linda L.M. Worley, MD, FAPM (Little Rock, AR)

Vice President: Catherine C. Crone, MD, FAPM (Falls Church, VA)

Secretary: Steven Epstein, MD, FAPM (Washington, DC)

Treasurer: Robert Boland, MD, FAPM (North Kingston, RI)

Councilors (3-year terms):

J. Michael Bostwick, MD, FAPM (1st term) (Rochester, MN)

Jeff Huffman, MD, FAPM (1st term) (Boston, MA)

Donna Greenberg, MD, FAPM (1st term) (Winchester, MA)

James Rundell, MD, FAPM (2nd term) (Jacksonville, FL)

Change to By-Laws:

Minor changes to the Bylaws have been proposed regarding the requirements for Life Fellow and Life Member status and will be voted on by the members present. At its May 10 meeting, Council approved amending the Life Fellow/Life Member category by reducing the combined age and membership years from 100 to 95, with annual dues of \$100, with the exception that current Life Fellows/Life Members be allowed to continue to pay no dues.

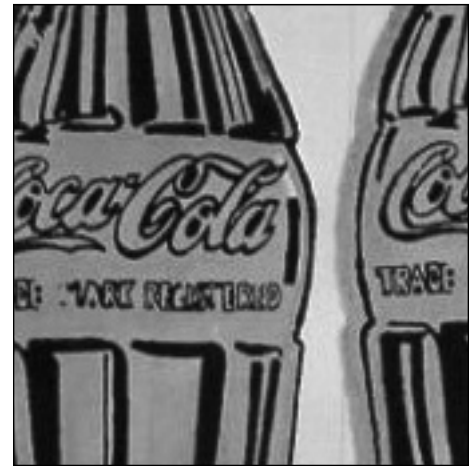
*Please be sure to take the
2012 APM Membership Survey
by July 30!*

Sign into the Members' Corner and take the link. See the Membership Committee's article on page 14.

QUICK TIPS FOR GIVING UNFORGETTABLE PRESENTATIONS

— Linda L.M. Worley, MD, FAPM, APM 2011-2012 Vice President

- ✓ **Know Your Audience.** Target your presentation to the full range of expertise in your audience, being certain to have a little something for everyone. Avoid being overly simplistic, nor mind-bogglingly complex.
- ✓ **Preparation.** Know how long you have for your presentation and be ruthless with yourself to pare down the content to a reasonable amount to cover in the time you have. Resist the temptation to pack too much into a single slide. It is SO frustrating for audiences to not be able to fully learn what you are trying to teach. If you discover a “pressured slide,” take the time to divide key points into several separate slides to more effectively teach the material.
- ✓ **Practice.** One trick (albeit painful) is to rehearse ahead of time, recording yourself and listening to how you come across. Makes a huge difference. Better yet, have a speaking coach or trusted colleague mentor you, giving you constructive feedback about what’s really working well and what could be tweaked.
- ✓ **Team Presentations.** If you’re presenting with others, go over the intellectual content together prior to the meeting to avoid overlap. Then whenever possible, give a run through presentation of the entire workshop. Never monopolize the allotted time of a colleague. Be respectful of your teammates.
- ✓ **Logistics.** Arrive well in advance of your presentation to be certain all AV equipment and components of your presentation work seamlessly.
- ✓ **Initial Impressions.** You’ll capture your audience’s attention (or not) within the first few moments. Pay heed to your appearance—as unfair as it is, a speaker is first judged by her/his overall appearance and second by his/her message. Test this theory out when you watch newscasters—some judge women more harshly than men in this realm. Could be an interesting study!
- ✓ **Delivery.** Engage the hearts and minds of your audience. When appropriate, bring in memorable stories, and caveats. Be yourself, sharing your knowledge and expertise in a confident yet humble, friendly manner. You never know, some of your most valued future life-long friends and colleagues may emerge after your talk to meet you in person.



Detail from Andy Warhol's Coca-Cola paintings

Coke (the southern word for soda) was invented in Atlanta on May 8, 1886 by pharmacist John Stith Pemberton. The drink went over quite well since its ingredients included cocaine until 1929. The World of Coca-Cola—a plethora of artifacts, exhibits, a gallery, and beverage sampling—is right across from Centennial Olympic Park. A convenient way to get to the park is to take the special APM Centennial Olympic Park Tour bus on Thursday afternoon or Friday morning!

**REMEMBER TO RESERVE
YOUR HOTEL ROOM
BY OCTOBER 22
FOR THE APM DISCOUNT!
877-422-8254**

SPECIAL SESSIONS & EVENTS FOR TRAINEES & EARLY CAREER PSYCHIATRISTS

In addition to the Early Career program track for workshops and symposia at this year's annual meeting, the Annual Meeting Committee will be presenting several events to serve the goal of meeting the needs of our growing cadre of future PM psychiatrists.

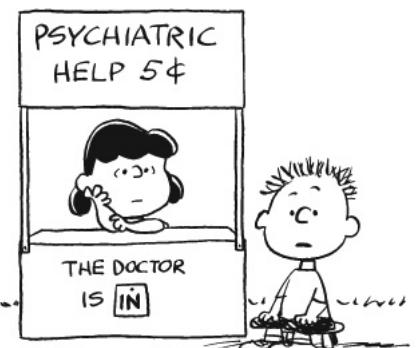
Wednesday, 5:00-6:00pm: **Trainee & Early Career Mixer**

Wednesday, 7:00-9:00pm: Fellows in training are invited and encouraged to join the **Fellowship Directors' Forum** to discuss topics important to both fellows and directors.

Thursday, Friday, Saturday: Trainees and early career psychiatrists will be able to sign up for 20 minutes of career advice at a series of **Consultation Booths** during the regular meeting. And yes, each consultation will cost 5¢.

Saturday, 12:45-2:15pm: Priced separately (\$10) is a **Trainee & Early Career Lunch** during which junior psychiatrists can lunch with a senior psychiatrist for career or research consultation. Tables will be set up according to area of interest.

If you are a psychiatry resident or PM fellow in training, be sure to apply for the \$750 Trainee Travel Award to help offset the cost of attending the meeting. See page 4 for more information about this award.



FIRST TIME ATTENDING APM?

If this is your first time attending an APM annual meeting, here are some helpful hints to ensure that you get the most out of the event:

- **Always wear your name tag:** People will notice that you're a new member or first-time attendee by the ribbons on your name tag and they will introduce themselves to you. Just being receptive is all it takes to make a lot of new connections!

Also, if you are being photographed, please let your name tag show your name so we can tell who you are later!

- **Get there at the beginning and stay to the end:** Attend everything you can. Not only can you receive a maximum of 31.5 CME credits, you will leave with a wealth of knowledge from experts in the field and great new contacts.

- **Speak up:** This is a very friendly, interactive meeting, so jump right in! If you have an idea or feedback, or if you have an area of expertise that overlaps with what's being discussed, go for it! No matter what your level of training, people will be glad to hear from you.

- **Find new friends, collaborators and mentors:** Everyone at the meeting has an interest in teaching, learning, research, and scholarship, so what better place to find connections! If you find someone with a common interest, they will almost certainly be happy to work with you, advise you, give you feedback, or help you on your next project. Networking opportunities are available throughout the meeting. Make sure you attend the Wednesday mixer, the Thursday and Friday luncheons, the Thursday Welcome Reception, and any other advertised social event.

- **Get Involved:** Once you've gotten a feel for what APM is all about, get involved! You are welcome to attend special interest group meetings and let committee chairs know you are interested in joining their committee.

- **Have fun:** All work makes Jack a dull boy. The Annual Meeting Committee wants to ensure that there is a nice balance between facts and fun and has scheduled morning runs, a mindful meditation, group tours, and happy hours.

ATLANTA CUISINE

SOUTHERN CUISINE

Cuisine in Atlanta today is metropolitan and varied, but it has its roots in the blending of Native American, African-American, and European foods and methods of cooking. Georgian cuisine is Southern Cuisine—fried chicken and barbeque, hearty breakfasts of biscuits, pancakes, or waffles accompanied by grits and bacon, and sweet tea. And Coke.

ATLANTA'S CASUAL, CAMPY CUISINE

Richard Blais, 2010 winner of Top Chef: All Stars, has several restaurants in the Atlanta area, including Flip Burger Boutiques (one is in the Buckhead area, 20 minutes away from the hotel by bus). Flip Burger offers 18 hamburger variations, vodka-battered onion rings, fried pickles, and sweet potato tater tots on its menu. Flip Burger has been credited with creating a "hamburger war" among restaurants in the Atlanta area, owing to Blais' celebrity chef status. His other two eateries are a hot dog joint (serving more than just your average hot dogs) and a fine dining establishment.

CHICK-FIL-A

An Atlanta native since age 3, S. Truett Cathy opened a tiny restaurant in 1946 and began experimenting with chicken. He is credited with inventing the first fast-food chicken sandwich, trademarking his concoction in the early 1960s as the "Chick-fil-A." Today, Chick-fil-A diners and restaurants dot the entire country. There's a Chick-fil-A very close to the InterContinental Buckhead.

Prefer to dress up for dinner or experience something with an international flavor? The 2012 Local Arrangements Subcommittee, as well as the hotel's concierge, can recommend a myriad of restaurants that offer whatever your taste buds have a hankerin' for.



Important Deadlines...

- Aug. 1 Last day to apply for:
 - Webb Fellowship Program
 - APM Fellowship (FAPM)
 - Trainee Travel Award
- Aug. 15 Last day to register for the meeting at the Early Bird discount rate
- Sept. 17 Last day to register for the meeting at the Advanced discount rate
 - Last day for pre-conference course presenters to submit slides for handout printing
 - Last day for course, workshop, and symposia presenters to submit MOC questions
- Oct. 14 Last day to cancel meeting registration for full refund minus \$50 service fee
- Oct. 15 Last day to switch any pre-conference Skills course you registered for
- Oct. 22 Last day to make hotel reservations for APM discounted rate of \$150/night
- Oct. 29 Last day to register for the meeting in advance
- Nov. 1 Last day to cancel meeting registration for 50% refund
- Nov. 2 Recommend oral presenters submit slides for posting in password-protected section of APM website prior to the Annual Meeting
- Nov. 14 PRE-CONFERENCE COURSES
- Nov. 15 ANNUAL MEETING BEGINS, 8:00am

MAINTENANCE OF CERTIFICATION

—Robert Boland, MD, FAPM
Chair, Maintenance of Certification Subcommittee

By now, most of us have heard something about maintenance of certification (MOC). Although the details are complicated, the basic rationale is simple: psychiatrists need to show that once their formal training is over, they are continuing to practice life-long learning. The adage of the wise old doctor who improves with experience is not true: many doctors' skills deteriorate after their formal training is over if they do not challenge themselves to keep up with the latest developments in their field.

That lifelong learning is important to professional development is inarguable, but the devil is in the details. How can one demonstrate that they are keeping up in their field? The American Board of Psychiatry and Neurology (ABPN) has identified four components that must be demonstrated to remain board certified:

- (1) professional standing
- (2) self-assessment and CME
- (3) cognitive expertise
- (4) performance in practice (PIP)

The first and third components are not new: professional standing is demonstrated by holding an active and unrestricted license to practice medicine, and cognitive expertise is demonstrated by passing an ABPN board examination; these have been long-time requirements for board certification.

The second component is an elaboration of the previous expectation that physicians complete a minimum number of Continuing Medical Education (CME) requirements—already required for licensure in most states—by two additions: the require-

ment of completing an average of 30 specialty or subspecialty Category 1 CME credits per year, as well as the requirement that 8 of those CMEs must be spent in approved self-assessment activities. Self-assessment activities are meant to be different from cognitive exams in that they must take place before an activity; the purpose is to alert the psychiatrist to potential knowledge deficits in order to direct their study at a CME activity.

The final component, performance in practice, is a type of quality assurance in which physicians must demonstrate that they are assessing their own practice by (1) performing chart reviews in which they compare their practice against published best practice; and (2) feedback modules in which the psychiatrist must collect data from patients.

Details of the ABPN's MOC program can be found in more detail on its web site: www.abpn.com/moc.html

There have been various criticisms of the process, and the last component, performance in practice, has been the most controversial. However, no one can dispute the basic principles underlying this effort: we all must keep educating ourselves after residency, and if we do not develop a credible system of self-monitoring, outside agencies will likely do it for us. Most other specialties have ongoing systems in place, some for a long while, so in a sense, psychiatry is simply playing catch up.

This system does create a burden, both in complying with these requirements and in recordkeeping. A number of organizations are attempting to help with this. For example, the ABPN is maintaining a folio site to help with recordkeeping, and both the

ABPN and the APA list various resources to help with the various aspects of MOC (see links below).

The Academy of Psychosomatic Medicine can also help members with this process. We already offer a meeting that provides various approved CME activities, and this year we plan to add a Self-Assessment Component. Prior to the meeting, all registrants will receive an invitation to take a "pre-meeting self-assessment" in which they will answer questions related to the meeting several weeks before arriving at the meeting. Just before the meeting they will receive a report that contains their own answers, the correct answers, and how their responses compare with those of other persons taking the pre-test. This approach is in keeping with the ABPN's requirement that self-assessment activities occur prior to a meeting and be used to inform the taker of areas that may require attention.

We piloted a version of this self-assessment the past two years as part of the *Updates in Psychosomatic Medicine* course that took place at the Annual Meeting; most of those attending the course completed the exam and received the appropriate feedback prior to arriving at the meeting. The response to the system was generally positive. This year the system will be similar but with broader coverage: MOC questions will cover all the pre-conferences courses as well as the workshops and symposia, and all pre-registrants will be able to take advantage of this component, whether or not they are taking the board exam soon. Although we all tend to gravitate toward subjects with which we are familiar, it may be helpful to discover areas in

which we are less up-to-date and to make a point of attending sessions devoted to those subjects.

We hope that this system will represent a painless way to add value to the meeting. The plan is to offer it free to all attendees and we hope that it will be an additional educational experience for an already edifying meeting.

Details of the ABPN MOC Program:

<http://www.abpn.com/moc.html>

ABPN Folio site:

<https://application.abpn.com/webclient/folios.aspx>

ABPN resources:

http://www.abpn.com/moc_products.asp

APA resources:

<http://www.psych.org/learn/cme/recertification-moc/maintenance-of-certification-moc-resources>

Web Links for MOC Information

INITIAL SUBSPECIALTY CERTIFICATION AND RE-CERTIFICATION

— *Philip A. Bialer, MD, FAPM*
Chair, APM Education Committee

The next ABPN exam for initial certification in Psychosomatic Medicine will be given October 15-18, 2013. While this seems to be in the distant future, some deadlines for taking the exam will be approaching in the next several months. The “grandfathering period” for initial certification ended with the 2009 exam. Eligible applicants for the 2013 exam must have successfully completed an ACGME-certified fellowship training program by June 30, 2012. In addition, the applicants must be certified by the Board in General Psychiatry by December 31, 2012. Following are other important dates regarding the exam:

- Applications available: January 3, 2013
- Application deadline: April 1, 2013
- Late application deadline: May 1, 2013
(\$500 fee)

Training directors should make their current fellows and recent graduates aware of these dates and requirements. I would also encourage all of those preparing for the exam to take advantage of the excellent educational offerings among the pre-conference courses and the regular program at this year’s annual meeting.

The subsequent certification exam in Psychosomatic Medicine will take place in 2015. Those who became diplomates after taking the initial exam in June 2005 will need to take this exam to be re-certified. However, maintenance of certification (MOC) requires more than just passing the exam or what is termed “demonstrating cognitive expertise.” Additional components of MOC include professional standing, self-assessment and CME, and performance in practice (see Dr. Boland’s article on page 12). Once again, the annual meeting is an excellent resource for fulfilling the self-assessment and CME requirement. This year, all pre-conference courses, workshops, and symposia will include self-assessment questions. Further information regarding the self-assessment process will be provided along with registration material for the meeting.

For detailed information about certification and re-certification, see the ABPN website at www.abpn.com.

PRESENTERS: GIVE US YOUR MOC QUESTIONS BY SEPTEMBER 17

In order for the APM to help with the self-assessment component of the ABPN’s new requirements for subspecialty re-certification, we need the presenters of all pre-conference courses, workshops, and symposia to submit well-composed, multiple-choice questions (and their answers!) on material covered in their presentation. The APM Education Committee will compile the questions into a “pre-meeting self-assessment test.”

As Dr. Boland explains in his article on page 12, meeting registrants will be invited to take the test before the meeting and receive feedback on their performance in time to choose meeting sessions that cover subjects in which they are less up-to-date.

We ask pre-conference course presenters to submit four (4) MOC questions, and we ask workshop and symposia presenters to submit three (3) questions. (Oral paper and poster presenters are exempt from this request.)

A special online form will be available in late July to submit the questions, or you may email your questions to Kristen Flemming at kflemming@apm.org. However, **we must have your questions by September 17** in order to prepare the pre-test in time.

Please see the “For Presenters” web page in the 2012 Annual Meeting section of the website for a link to the submittal form as well as guidelines on how to write good multiple choice questions.

GOT A/V IN YOUR POWERPOINT?

Read This!

Meeting rooms in Atlanta will be set up with a podium, one microphone, a laptop with PowerPoint installed, and an LCD projector. Presenters may opt to project their PowerPoint slides from their own laptop or, with their presentation on a USB flash drive or memory stick, using the room’s laptop.

For presentations with embedded video or audio, we highly recommend that you follow these steps to copy your presentation to your USB device, either to use in the meeting room or to have as a backup in case you and your laptop get separated:

1. Prepare your PowerPoint file and embed your A/V (.avi, .mpg or .mpeg, and .wmv video files work best with PowerPoint).
2. Create a NEW FOLDER on your computer.
3. Copy all audio/video and your PowerPoint file into that NEW FOLDER. Make sure your PowerPoint file points to the audio/visual files in that same NEW FOLDER.
4. Transfer the entire NEW FOLDER onto your portable USB drive.
5. TEST your presentation. Close everything and open your presentation directly from your portable USB drive. All your A/V should play seamlessly.
6. Bring your portable USB drive to the meeting! Your entire NEW FOLDER can be loaded onto the presentation laptop, and you should be good to go.

An A/V technician will be available at the meeting to quickly review your presentation if you are prepared at least 24 hours in advance of your presentation. We strongly encourage you to take advantage of this service to resolve any potential A/V issues.

MAC USERS PLEASE NOTE: If you plan to present from your own laptop, you must bring your own A/V adapter with you! These are not available on site. This adapter is the extended display adapter you received with your original Mac laptop or computer allowing you to send video out to another device.



Example A/V Adapter

CLEVELAND C-L SOCIETY

— Ellen Rothchild, MD, FAPM

The Cleveland Consultation-Liaison Society held its annual meeting on May 2, 2012 at the Cleveland Skating Club, Shaker Heights, Ohio. Participants included residents and faculty from University Hospitals of Cleveland, MetroHealth Medical Center, the Cleveland VA Medical Center, Cleveland Clinic Foundation, and Summa Health System of Akron, Ohio. The meeting was chaired by President Tatiana Falcone, MD, of Cleveland Clinic, and Vice President **Jeanne Lackamp, MD** of University Hospitals.

Dr Todd Ivan, Director of C-L Psychiatry for Summa System, presented the keynote address, "The Biopsychosocial Model in the 21st Century."

Thirteen oral presentations and fifteen posters were presented by residents and faculty from the various teaching institutions. The annual Parsa award, in memory of Dr. Mahmoud Parsa, went to Almeria Decker, PGY-2 of University Hospitals, for her oral presentation, "Management of Neuropsychiatric Manifestations in a Patient with Anti-NMDA Receptor Encephalitis." The Agle award, in honor of Dr. David Agle, went to Laurel Ralston, PGY-3 at Cleveland Clinic, for her poster, "Tamoxifen-induced Depression."

MEDICINE AND PSYCHIATRY SIG

—Thomas W. Heinrich, MD, FAPM

The APM Medicine and Psychiatry SIG will be meeting at the Association of Medicine and Psychiatry (AMP) Annual CME Conference, which will be held at the Blackstone Renaissance Hotel in Chicago on Friday and Saturday, September 28 and 29, 2012.

The AMP Conference schedule includes many wonderful educators, most of whom are nationally recognized experts on the interface between psychiatry and medicine. For example, keynote speaker Mark Sevis, MD, will discuss the interface in postgraduate training, and **José Maldonado, MD, FAPM**, will be providing a comprehensive presentation on delirium. In addition, the conference will include popular returning sessions such as MedPsych Updates, Neuropsychiatry, Innovations in Integrated Care, and the Resident Clinical Vignette Competition. More information and a registration link is on AMP's website: www.assocmedpsych.org

**REMEMBER TO REGISTER
for the Annual Meeting
by August 15th
for the Early Bird Discount!**
**Be sure to sign into the Members'
Corner before using the online
registration system to receive the
member discount.**

CLINICAL CARE SIG

—Dimitri S. Davydow, MD, MPH

As psychosomatic medicine providers, a substantial proportion of our time caring for patients and assisting our colleagues in other medical specialties is devoted to the diagnosis and management of delirium. Perhaps in no other hospital setting is delirium a more commonplace or more pressing matter than in the intensive care unit (ICU), where the prevalence of delirium ranges from 70-80%, and symptoms of delirium can interfere with necessary life-saving care and prolong recovery.

However, there is a limited evidence base regarding the pharmacologic management of delirium, particularly the use of antipsychotic medications, in ICU settings. Since psychosomatic medicine providers play a crucial role in the care of critically ill patients with delirium, an important initial step in developing an evidence base around these issues is to understand what we as a community are currently doing in our everyday practice around management of delirium in ICU settings, particularly surrounding the use of antipsychotic medications.

With that in mind, the APM Critical Care SIG has designed a brief survey on management of delirium in ICU settings. The link to the survey will be in an upcoming email from the Academy, and we hope you take the time to fill it out. The results will be disseminated to the Academy membership.

MEMBERSHIP COMMITTEE NEEDS YOUR FEEDBACK BY JULY 30

One priority that was identified at Council's strategic planning session last June was the need to optimize the value of membership. So we need your help to understand what APM services and benefits add the most value to you.

Consequently, the Membership Committee (chaired by **Dr. Maria Tiamson-Kassab**) has created a short survey that will only take a couple of minutes to complete, but your

input is important to help guide the Academy's efforts to maximize the value of APM membership.

Simply sign into the Members' Corner by July 30 and take the link to the survey in the highlight box near the top of the page. If you've already taken the survey, you will be so notified when you take the link.

Thank you!

2013 Annual Meeting
November 13-16
Westin La Paloma Resort & Spa
Tucson, AZ

2014 Annual Meeting
November 12-15
Marriott Harbor Beach Resort
Ft. Lauderdale, FL



REGISTRATION FORM

ACADEMY OF PSYCHOSOMATIC MEDICINE 59TH ANNUAL MEETING
 NOVEMBER 14-17, 2012 INTERCONTINENTAL BUCKHEAD HOTEL, ATLANTA, GA

▶▶▶ Register online. It is quick and secure! Go to apm.org and link to the online registration system.

1. CONTACT INFORMATION (Type or print only)

Name _____ Degree(s) _____ First Time Attending

Name as you would like it to appear on badge (if different from above) _____

Address _____

City/State/Zip/Country _____ Phone (_____) _____

E-mail _____ Fax (_____) _____

Check here if you have special needs (dietary restrictions, disability, etc.) An APM staff member will contact you.

Check here if you are traveling from outside the USA and want to know if you are eligible for a discounted non-US conference fee based on the World Bank Categories. An APM staff member will contact you.

2. PRE-CONFERENCE & MEETING REGISTRATION

Check the boxes in the fee schedule below depending on your membership status, and whether you want to attend any of the pre-conference courses. For more information on the meeting and pre-conference courses, visit www.apm.org or call (301) 718-6520.

2a. APM ANNUAL MEETING (Thurs. Nov. 15 - Sat. Nov. 17)

✓ CHECK ONE BOX ONLY

	Early Bird by 8/15/12	Advanced by 9/17/12	On Site after 9/17/12
APM Member	<input type="checkbox"/> \$495	<input type="checkbox"/> \$595	<input type="checkbox"/> \$645
Non-Member Presenter [Listed in program]	<input type="checkbox"/> \$495	<input type="checkbox"/> \$595	<input type="checkbox"/> \$645
Non-Member	<input type="checkbox"/> \$695	<input type="checkbox"/> \$795	<input type="checkbox"/> \$845
Early Career* (Completion Date _____)	<input type="checkbox"/> \$475	<input type="checkbox"/> \$575	<input type="checkbox"/> \$625
Trainee**	<input type="checkbox"/> \$180	<input type="checkbox"/> \$230	<input type="checkbox"/> \$280
EAPM Member (Mbr # _____)	<input type="checkbox"/> \$495	<input type="checkbox"/> \$595	<input type="checkbox"/> \$645
Integrated Care Two-Day Rate	<input type="checkbox"/> \$360	<input type="checkbox"/> \$410	<input type="checkbox"/> \$460

(Wed. & Thurs. only)

* Within 5 years of completing training; provide completion date above.

** Proof of status at current institution must accompany this registration form.

3. GUEST EVENT TICKETS

Annual Meeting registrants receive **complimentary** access to the events listed below. Additional tickets may be purchased for non-registered guests for these events.

Thursday Research Lecture Luncheon: _____ @ \$35/person \$ _____

Thursday Evening Welcome Reception: _____ @ \$35/adult \$ _____

_____ children under 5 FREE

Friday Awards & Convocation Luncheon: _____ @ \$35/person \$ _____

TOTAL GUEST EVENT TICKETS \$ _____

4. OPTIONAL EVENT TICKETS

Pre-Conference Lunch / Wed. Nov. 14 _____ @ \$25/person \$ _____

Centennial Olympic Park Tour / Thurs. Nov. 15 _____ @ \$35/person \$ _____

Centennial Olympic Park Tour / Fri. Nov. 16 _____ @ \$35/person \$ _____

Trainee & Early Career Lunch / Sat. Nov. 17 _____ @ \$10/person \$ _____

5. 2013 MEMBERSHIP DUES (applies to current members only)

All current (2012) members can pay 2013 membership dues with this meeting registration.

APM Fellow or Full Member..... \$225 Member-in-Training..... \$55

Associate Member..... \$175

6. PAYMENT

I wish to make payment by Check or Money Order Credit Card

If paying by check or money order, make payable to "APM" and mail with this form to:
APM-Annual Meeting Registration: 5272 River Road, Suite 630, Bethesda, MD 20816

◀ FAX COMPLETED FORMS TO (301) 656-0989 OR MAIL TO ADDRESS ABOVE.

2b. PRE-CONF. COURSES (Wed. Nov. 14)

Updates in Psychosomatic Medicine (8am-5:15pm) ▶ includes lunch

APM Member \$300

Non-Member Presenter [Listed in program]..... \$300

Non-Member..... \$400

Early Career* (Completion Date _____)..... \$275

Trainee** (see 2a)..... \$150

EAPM Member (Mbr # _____)..... \$300

On-site fee
will be
\$50 additional.

Morning Skills Courses (8am-Noon)

Legal and Risk Management Issues in Psychosomatic Medicine

Writing for Publication: Strategies for Success

Perinatal Psychiatry

Integration of Primary Care and Behavioral Health

Optional Lunch (see section 4 to purchase)

Afternoon Skills Courses (1pm-5pm)

Delirium: Novel Perspectives and Long Term Outcomes

Internal Medicine for the Consultation-Liaison Psychiatrist

Telepsychiatry in Psychosomatic Medicine

Psychotherapy in the Medically Ill: Skills for the Bedside and Beyond

Per Course

APM Member \$175

Non-Member Presenter [Listed in program]..... \$175

Non-Member..... \$225

Early Career* (Completion Date _____)..... \$150

Trainee** (see 2a)..... \$75

EAPM Member (Mbr # _____)..... \$175

Integrated Care..... \$0 (incl. in 2-day rate)

On-site fee
will be
\$25 additional
per course.

Fee Calculation:

2a. Annual Meeting \$ _____ 4. Optional Events \$ _____

2b. Pre-Con. Courses \$ _____ 5. 2013 Mbrshp. Dues \$ _____

3. Guest Event Tickets \$ _____

TOTAL REMITTANCE (US FUNDS) \$ _____

If paying by credit card, complete this section:

VISA MC AMEX

Card Number _____

Exp. Date (mm/yy) _____ Security Code _____

Name on Card _____

Signature _____

CANCELLATION POLICY: Full refund, minus a \$50 fee, if notified in writing **before October 14, 2012**. A 50% refund will be allowed if notified in writing **between October 14 and November 1, 2012**. No refund **after** November 1, 2012. Approved refunds will be distributed approximately 30 days after conclusion of the Annual Meeting.

Academy of Psychosomatic Medicine

5272 River Road, Suite 630
Bethesda, Maryland 20816

First-Class Mail
U.S. Postage
Paid
Permit No. 195
Frederick, Md



APM in Atlanta

“Bioethics at the Interface of Psychiatry & Medicine”

APM 59TH ANNUAL MEETING

November 14-17, 2012

InterContinental Buckhead Hotel, Atlanta, Georgia

Register by August 15 for the Early Bird Discount

Reserve your room by October 22 for the hotel's APM discount



Foundation of the Academy
of Psychosomatic Medicine

fAPM NEWS

Thanks to the generosity of APM members at the meeting last year, the Foundation has raised sufficient funds to provide support for two Webb Fellows in 2012.

The silent and live auction bids, as well as direct donations, are very much appreciated. We hope to hear from people who had the winning bids on trips. I had the winning bid for the Mets tickets. I sent my old college roommate to a game with his family. They were met by a member of the Mets organization, taken to the field for batting practice, and sat in fabulous seats. That was the game that the Mets won 9-0 on May 26th. Hopefully, we will have those and other exciting items for the live auction this year in Atlanta. fAPM will sponsor

a live auction to be held during the Opening Reception on Thursday and daily raffles of fabulous items to be held each day. There will not be a silent auction this year.

If you have fabulous items for the live auction or raffles, or know how to put us in touch with people who have such items, please get in touch with me personally (prm1@columbia.edu). At a later date we will introduce our plans for fundraising with the goal of endowing awards. But for now, have a great summer and see you in Atlanta.

— Philip R. Muskin, MD, FAPM

Chair, Foundation of the Academy of Psychosomatic Medicine



ACADEMY OF
PSYCHOSOMATIC
MEDICINE

Winter 2012

NEWSLETTER

APM — The Organization for Consultation and Liaison Psychiatry