

ACADEMY OF
PSYCHOSOMATIC
MEDICINE



60TH
ANNUAL
MEETING

TUCSON
ARIZONA
WESTIN LA PALOMA

13-16
NOVEMBER
2013

Psychosomatic Medicine Models in the Era of Health Reform

FINAL PROGRAM





WELCOME TO THE 60TH APM ANNUAL MEETING

The Academy of Psychosomatic Medicine, and especially its 2013 Annual Meeting Committee, welcomes you to the 60th Annual Meeting, this year held in Tucson, Arizona, at the exceptional Westin La Paloma Resort & Spa.

Our meeting theme this year has particular resonance: *Psychosomatic Medicine Models in the Era of Health Reform*. With a broad set of new provisions of the Patient Protection and Affordable Care Act (PPACA) scheduled to come into effect in January 2014, our program this year features research findings, news and opinion on how our profession will be affected.

Our special, first-time, Presidential Symposium on Thursday, November 14, 'Bench to Clinic and Beyond: Dissemination of Evidence-Based Integrated Care Models' features some of the top thinkers in our profession:

- Jürgen Unützer, MD, MPH, MA
- Benjamin Druss, MD, MPH
- David Katzelnick, MD
- Wayne Katon MD, FAPM

Our Friday, November 15 plenaries feature Kurt Kroenke, MD, MACP, presenting 'Somatic Symptoms as a Bridge between the Brain and the Body' and the DSM-5 Somatic Symptom Disorders work group presenting a 'Meet the Experts Q&A' about the DSM-5 changes.

Hundreds of abstract submissions this year are a testimony to the vitality of our meeting and its importance in our professional lives. The very best have been competitively selected to present you with a wealth of ideas and research in concurrent paper sessions, a record-setting poster session, workshops, and symposia. The Hackett Award lecture by James Levenson, MD, FAPM, and the Research Award lecture by Brett Thombs, PhD, will be noteworthy highlights.

The Annual Meeting Committee



James Rundell, MD, FAPM, *Chair*
J. Michael Bostwick, MD, FAPM, *Vice Chair*
Linda Ganzini, MD, FAPM, *Advisor*



Sandra Rackley, MD, *Assistant to the Chair*
Thomas Heinrich, MD, FAPM, *CME Liaison*
[Medical College of Wisconsin]

Table of Contents

Welcome to the 60 th APM Annual Meeting	2
Accreditation	3
2012-2013 APM Council	3
Annual Meeting Subcommittees	3
Tuesday, November 12	4
Wednesday, November 13	4
Thursday, November 14	6
Special Interest Groups	7
Program Tracks	8
Friday, November 15	17

Saturday, November 16	25
Sunday, November 17	27
Summary of Social Events/Local Attractions/Tourism	28
Committee & SIG Meetings	29
Foundation of the Academy of Psychosomatic Medicine	31
fAPM Donation Form	32
Hotel Floor Plans	35
APM Membership	inside back cover
Exhibitors	Back cover
Join Us Next Year!	Back cover



ACCME Accreditation Statement

This activity has been planned and implemented in accordance with the Essential Areas and policies of the Accreditation Council for Continuing Medical Education (ACCME), through the joint sponsorship of the Medical College of Wisconsin and Academy of Psychosomatic Medicine. The Medical College of Wisconsin is accredited by the ACCME to provide continuing medical education for physicians.

AMA Credit Designation Statement

The Medical College of Wisconsin designates this Live Activity for a maximum of 28.5 AMA PRA Category 1 Credit(s)[™]. Physicians should claim only the credit commensurate with the extent of their participation in the activity.

Hours of Participation for Allied Health Care Professionals

The Medical College of Wisconsin designates this activity for up to 28.5 hours of participation for continuing education for allied health professionals.

Learning Objectives

At the end of this meeting participants will be able to:

- Apply psychosomatic medicine research findings to clinical care scenarios for persons with comorbid psychiatric and general medical conditions.
- Describe the roles, strengths, and challenges of psychosomatic medicine clinical models in a changing healthcare environment.
- Delineate evidence-based methods of delivering psychosomatic medicine clinical care when integrated into primary care and specialty care settings.
- Improve and expand knowledge about improving the medical outcomes of chronically and persistently mentally ill patients.
- Define workforce and graduate medical education training needs for psychosomatic medicine in the era of health care reform.

Annual Meeting Subcommittees

Early Career Track

Divy Ravindranath, MD, MS,
Co-chair
Kristin Somers, MD, Co-chair
Rashi Aggarwal, MD
Patrick Aquino, MD
Scott Beach, MD
Rebecca Brendel MD, JD, FAPM
Anne Gross, MD
Laura Kent, MD
J.J. Rasimas, MD, PhD, FAPM

Local Arrangements

Nehama Dresner, MD, FAPM,
Co-chair
Ann Schwartz, MD, FAPM,
Co-Chair
Anne Gross, MD
Laura Kent, MD
Karen Weihs, MD

Oral Papers & Posters

Jon Levenson, MD, FAPM,
Co-chair
Christina Wichman, DO,
FAPM, Co-chair
Jason Caplan, MD, FAPM
M Beatriz Currier, MD, FAPM
Mary Jo Fitz-Gerald, MD, FAPM
Oliver Freudenreich, MD, FAPM
Rita Hargrave, MD
Lucy Hutner, MD
Laura Kent, MD
Karen Lommel, DO
Shehzad Niazi, MD
Roberto Jorge Ortiz-Aguayo, MD
Terry Rabinowitz, MD, DDS, FAPM
Muhamad Aly Rifai, MD, FAPM
Lisa Seyfried, MD

Pre-Conference Courses

Philip Bialer, MD, FAPM,
Co-chair
Maryland Pao, MD, FAPM,
Co-chair
Rashi Aggarwal, MD
James Levenson, MD, FAPM
Eliza Park, MD
Lisa Rosenthal, MD, FAPM
Lisa Seyfried, MD
Theodore Stern, MD, FAPM
Linda Worley, MD, FAPM

Workshops & Symposia

J. Michael Bostwick, MD, FAPM,
Co-chair
Christopher Sola, DO, FAPM,
Co-chair
Khyati Brahmabhatt, MD
Marc Feldman, MD
Thomas Heinrich, MD, FAPM
Jeff Huffman, MD, FAPM
Manuel Pacheco, MD, FAPM
Sanjeev Sockalingam, MD, FRCPC

2012-2013 APM Council

President

Wayne Katon, MD, FAPM

President-Elect

Linda Worley, MD, FAPM

Vice President

Catherine Crone, MD, FAPM

Secretary

Steven Epstein, MD, FAPM

Treasurer

Robert Boland MD, FAPM

Immediate Past Presidents & Governors

Donald Rosenstein, MD, FAPM

John Shuster Jr, MD, FAPM

Councilors

Philip Bialer, MD, FAPM
J. Michael Bostwick, MD, FAPM
Rebecca Brendel MD, JD, FAPM
Linda Ganzini, MD, MPH, FAPM
Donna Greenberg, MD, FAPM
Jeff Huffman, MD, FAPM
Maryland Pao, MD, FAPM
James Rundell, MD, FAPM
Michael Sharpe, MD, FAPM
Maria Tiamson-Kassab, MD, FAPM

Editor, *Psychosomatics*

Theodore Stern, MD, FAPM

Chair, Foundation of APM

Philip Muskin, MD, FAPM

Executive Director

James Vrac



◆ 7:00 – 9:00 PM

Registration Desk Open..... Lobby Foyer

WEDNESDAY, NOV. 13

◆ 7:00 AM – 7:00 PM

Registration Desk Open..... Lobby Foyer

◆ 8:00 AM – 12:00 noon

Updates in Psychosomatic Medicine Course [4.0 CME] Sonoran I
 Includes lunch (Sonoran II)

8:00 – 9:00 AM

Psychotropic Medications and QT Prolongation

Jeff Huffman, MD, FAPM, Massachusetts General Hospital, Boston, MA

9:00 – 10:00 AM

Psychopharmacology during the Perinatal Period

Christina Wichman, DO, FAPM, Medical College of Wisconsin, Muskego, WI

10:00 – 11:00 AM

Encephalopathies

Jason Caplan, MD, FAPM, Creighton University School of Medicine, Phoenix, AZ

11:00 AM – 12:00 noon

Non-benzodiazepine Management of Alcohol Withdrawal

Joshua Straus, MD, FAPM, NorthShore University HealthSystem, Evanston, IL

◆ 8:00 AM – 12:00 noon

Concurrent Skills Courses [4.0 CME each]**A Focused Review of Suicide for****the Consultation-Liaison Psychiatrist** Finger Rock II/III

Donald Rosenstein, MD, FAPM, University of North Carolina, Chapel Hill, NC

Steven Dobscha, MD, FAPM, Oregon Health & Science University, Portland, OR

Sheryl Fleisch, MD, Vanderbilt University, Nashville, TN

Linda Ganzini, MD, MPH, FAPM, Portland VA Medical Center, Portland, OR

Colin Harrington, MD, Rhode Island Hospital, Barrington, RI

Maryland Pao, MD, FAPM, National Institutes of Health, Bethesda, MD

Eliza (Leeza) Park, MD, University of North Carolina, Chapel Hill, NC

J.J. Rasimas, MD, PhD, FAPM, NIH: National Institute of Mental Health, Bethesda, MD

John Shuster, Jr, MD, FAPM, Alive Hospice, Nashville, TN

Theodore Stern, MD, FAPM, Harvard Medical School, Boston, MA

Jane Walker, MBChB, MSc, University of Oxford, Oxford, UK

Mindfulness Meditation: Foundational Skills for the PM Psychiatrist Indigo

Susan Abbey, MD, FAPM, University Health Network, University of Toronto, Toronto, ON, Canada

The Integration of Behavioral Health and Primary Care: Practical Skills Verbena

Lori Raney, MD, Axis Health System, Dolores, CO

John Kern, MD, Regional Mental Health Center, Merrillville, IN

Anna Ratzliff, MD, PhD, University of Washington, Seattle, WA

◆ 12:00 noon – 1:00 PM

Lunch on your Own (Optional buffet lunch available for purchase -\$25)..... Sonoran II

◆ 1:00 – 5:00 PM

First Council Meeting (Council members & invited guests)..... Lantana



♦ 1:00 – 5:00 PM

Concurrent Skills Courses [4.0 CME each]**Assessment and Management of the Opioid-Dependent Chronic Pain Patient**..... Indigo

Jon Streltzer, MD, FAPM, University of Hawaii, Honolulu, HI

Carl Sullivan, MD, West Virginia University, Morgantown, WV

Negotiating the Value of Your Service Verbena

Lawson Wulsin, MD, FAPM, University of Cincinnati, Cincinnati, OH

Roger Kathol, MD, FAPM, Cartesian Solutions, Inc., Burnsville, MN

Updates in Internal Medicine.....Murphey II/III

Thomas Heinrich, MD, FAPM, Medical College of Wisconsin, Milwaukee, WI

Heather Huang, MD, University of Wisconsin, Madison, WI

Victor Stiebel, MD, FAPM, University of Pittsburgh, Pittsburgh, PA

Harold Goforth, MA, MD, FAPM, The Cleveland Clinic, Cleveland, OH

J.J. Rasimas, MD, PhD, FAPM, NIH: National Institute of Mental Health, Bethesda, MD

Updates in NeuropsychiatryFinger Rock II/III

Yonas Geda, MD, MSc, Mayo Clinic, Scottsdale, AZ

Paula Trzepacz, MD, FAPM, FANPA, Lilly Research Laboratories and Indiana University School of Medicine, Indianapolis, IN

Ricardo Jorge, MD, University of Iowa, Iowa City, IA

Hochang Lee, MD, FAPM, Yale University School of Medicine, New Haven, CT

Cynthia Stonnington, MD, Mayo Clinic, Scottsdale, AZ

Colin Harrington, MD, Rhode Island Hospital, Barrington, RI

Bernard Vaccaro, MD, Beth Israel Deaconess Medical Center, Boston, MA

♦ 3:00 – 5:00 PM

Early Exhibitor Set-up.....Arizona Foyer

♦ 5:00 – 6:00 PM

Psychosomatics Editorial Board Meeting (by invitation).....Lantana

♦ 5:00 – 7:00 PM

APM Happy Hour..... Lobby Lounge

Present your APM badge in the AZUL Lounge for discounts

♦ 5:30 – 7:00 PM

New Member, First Time Attendee, Trainee & Early Career Mixer.....Arizona Deck

By invitation only

♦ 6:00 – 9:00 PM

fAPM Tennis Benefit; proceeds support the fAPM (\$45pp)..... Tennis Center

♦ 7:00 – 9:00 PM

C-L Fellowship Directors' Forum.....Lantana

Fellowship program directors and fellowship trainees



◆ 6:15 – 7:00 AM	Mindfulness Meditation with Paul Jones, MD Ironwood
◆ 6:15 – 7:00 AM	Neighborhood Run Meet in hotel lobby
◆ 6:30 AM – 7:00 PM	Registration Desk Open Lobby Foyer
◆ 7:00 – 8:30 AM	Exhibitor Set-up Arizona Foyer
◆ 7:00 – 9:00 AM	APM Committee Meetings See page 29 Continental breakfast served for committee members
◆ 8:30 AM – 5:00 PM	Exhibits Open Arizona Foyer
◆ 9:00 – 9:10 AM	Light Refreshments Arizona Foyer
◆ 9:10 – 9:30 AM	Annual Meeting Opening & Announcements Arizona Ballroom

◆ 9:30 – 11:30 AM

Plenary Session 1 [2.0 CME] Arizona Ballroom

◆ **Presidential Symposium: 'Bench to Clinic and Beyond: Dissemination of Evidence-Based Integrated Care Models'**

Introduction by: **James Rundell, MD, FAPM**, Annual Meeting Program Chair



Taking Consultation Psychiatry to Scale: Closing the Gaps between What We Know and What We Do

Jürgen Unützer, MD, MPH, MA

Professor and Vice Chair, Psychiatry and Behavioral Sciences; Director, Division of Integrated Care and Public Health; Director, AIMS Center, University of Washington, Seattle, WA



Improving Health and Health Care for People with Serious Mental Illnesses

Benjamin Druss, MD, MPH

Professor and Rosalynn Carter Chair in Mental Health, Department of Health Policy and Management, Rollins School of Public Health, Emory University, Atlanta, GA



Large-Scale Dissemination of Collaborative Care and Implications for Psychiatrists

David Katzelnick, MD

Associate Professor of Psychiatry, College of Medicine, Mayo Clinic, Rochester, MN



The TEAMcare Multi-Condition Intervention: Meeting the Triple Aim of Health Reform

Wayne Katon MD, FAPM

Professor, Vice-Chair, Director of Division of Health Services and Psychiatric Epidemiology, University of Washington Medical School, Seattle, WA

◆ 11:30 – 11:40 AM

Break Arizona Foyer

◆ 11:40 AM – 1:00 PM

Annual Research Award Lecture & Lunch [1.0 CME] Arizona Ballroom

Introduction by: **Michael Sharpe, MD, FAPM**



Improving Depression Care in Medical Settings: Is Screening the Answer?

Brett Thombs, PhD

William Dawson Scholar and Associate Professor, Faculty of Medicine, McGill University; and Senior Investigator, Lady Davis Institute for Medical Research, Jewish General Hospital, Montreal, QC, Canada



♦ 12:00 noon – 3:30 PM

Poster Set-up by Poster Presenters Grand Pavilion

♦ 1:00 – 1:20 PM

Break

SPECIAL INTEREST GROUPS

Where applicable, sessions with strong interests for APM SIG members have been tagged with the following codes:

ETH Bioethics	EMP Emergency Psychiatry	PED Pediatric Psychosomatic Medicine
CAR Cardiovascular Psychiatry	HIV HIV/AIDS	PSY Psychotherapeutic Approaches to the Medically Ill
COM Community-Based Psychosomatic Physician Practice Issues	INT International Relations	TEL Telepsychiatry
CRI Critical Care	MED Medicine and Psychiatry	TRA Transplant Psychiatry
ECP Early Career Psychiatry	NEP Neuropsychiatry	WOM Women's Health
	PAL Palliative Care	

♦ 1:20 – 3:20 PM

8 Concurrent Workshops (W) and Symposia (S) [2.0 CME]

S01: Psychiatric Management of Obstetrical Complications Sonoran I
Track: **CAW** SIG: **WOM**

Presenters: Carrie Ernst, MD, Mount Sinai School of Medicine, New York, NY
 Madeleine Fersh, MD, Icahn School of Medicine at Mount Sinai, New York, NY
 Kimberly Klipstein, MD, Icahn School of Medicine at Mount Sinai, New York, NY
 Laurie Chameides, MD, Icahn School of Medicine at Mount Sinai, New York, NY
 Shari Luskin, MD, Icahn School of Medicine at Mount Sinai, New York, NY

S02: Understanding the Clinical, Ethical, Legal, and Business Models of Accountable Care Organizations Murphey II/III
Track: **PCS** SIG: **COM**

Presenters: Amanda Green, MD, Massachusetts General Hospital/McLean Hospital, Cambridge, MA
 Rebecca Brendel, MD, JD, FAPM, Massachusetts General Hospital, Boston, MA
 Theodore Stern, MD, FAPM, Massachusetts General Hospital, Boston, MA
 Paul Summergrad, MD, FAPM, Tufts Medical Center, Boston, MA
 John Taylor, MD, Massachusetts General Hospital, Boston, MA

S03: Treating Both Heart and Mind: Toward Integrated Care for Cardiac Patients with Psychiatric Co-Morbidities Verbena
Track: **SCS** SIG: **COM CAR CRI**

Presenters: Hochang Lee, MD, FAPM, Yale University School of Medicine, New Haven, CT
 Jeffrey Huffman, MD, FAPM, Harvard Medical School, Boston, MA
 Bruce Rollman, MD, University of Pittsburgh School of Medicine, Pittsburgh, PA
 Wolfgang Soellner, MD, General Hospital Nuremberg, Nuremberg, Germany
 Lawson Wulsin, MD, FAPM, University of Cincinnati College of Medicine, Cincinnati, MD

S04: From Decisional to Dispositional Capacity: When is the Patient Really 'The Boss of His/Her Body?'

–A Bioethics SIG-sponsored Symposium..... Sonoran II

Track: **ETH** SIG: **ETH PAL PSY**

Presenters: James Bourgeois, OD, MD, FAPM, University of California San Francisco, San Francisco, CA
 Henry Bleier, MD, Perelman School of Medicine at the University of Pennsylvania, Philadelphia, PA
 Mary Ann Cohen, MD, FAPM, Mount Sinai School of Medicine, New York, NY
 Katharine Dalke, MD, University of Pennsylvania, Philadelphia, PA
 John Northrop, MD, PhD, University of Pennsylvania, Philadelphia, PA

S05: Psychiatric Issues in Traumatic Brain Injury: Implications for Quality Health Care Delivery Sonoran II
Track: **NEP** SIG: **CRI NEP**

Presenters: Jesse Fann, MD, FAPM, University of Washington, Seattle, WA
 Stephen Hunt, MD, University of Washington, Seattle, WA
 Richard Kennedy, MD, FAPM, University of Alabama, Birmingham, AL
 Vani Rao, MD, Johns Hopkins University, Baltimore, MD
 Jay Uomoto, MD, Barrow Neurological Institute, Phoenix, AZ

S06: Assessment and Management of Suicide Risk in Nonpsychiatric Settings Aster I/II
Track: **SUB** SIG: **PSY MED**

Presenters: Steven Dobscha, MD, FAPM, Portland VAMC, Portland, OR
 Linda Ganzini, MD, FAPM, Portland VAMC, Portland, OR
 Donald Rosenstein, MD, FAPM, University of North Carolina, Chapel Hill, NC
 Linda Worley, MD, FAPM, South Central Veterans Administration Health Care Network (VISN 16)



S07: Maintenance of Certification: Everything You Need to Know to Stay Board Certified.....

Track: **FUT** SIG: **ECP**

Presenters: Robert Boland, MD, FAPM, Brown University, North Kingstown, RI
J. Michael Bostwick, MD, FAPM, Mayo Clinic, Rochester MN
Steven Epstein, MD, FAPM, Georgetown University, Washington DC
David Gitlin, MD, FAPM, Brigham and Women's Hospital/ Harvard Med School, Boston MA
James Kimball, MD, FAPM, Wake Forest Baptist Medical Center, Winston-Salem NC
Cheryl McCullumsmith, MD, PhD, UAB School of Medicine, Birmingham, AL
Terry Rabinowitz, MD, DDS, FAPM, University of Vermont College of Medicine, Burlington VA
Barbara Schneidman, MD, The American Board of Psychiatry and Neurology, Chicago (Deerfield), IL

W01: From the Ground Up: Perspectives from Early Career Psychiatrists on Integrated Care Program Development and Implementation

Track: **ECP** SIG: **ECP COM**

Presenters: Hsiang Huang, MD, Cambridge Health Alliance, Cambridge, MA
Patrick Aquino, MD, Mount Auburn Hospital, Cambridge, MA
Arun Gopal, MD, Kaiser Permanente, Los Angeles, CA
Heather Huang, MD, University of Wisconsin School of Medicine and Public Health, Madison, WI
Jürgen Unützer, MD, University of Washington Medical Center, Seattle, WA
Felicia Wong, MD, Kaiser Permanente, Los Angeles, CA

◆ 3:20 – 3:30 PM

Break

◆ 3:30 – 5:30 PM

8 Concurrent Workshops (W) and Symposia (S) [2.0 CME]

S08: HIV Through the Life Cycle: A Joint HIV/AIDS and Pediatric SIG-sponsored Symposium

Track: **CAW** SIG: **HIV PED**

Presenters: Andrew Angelino, MD, DFAPA, Johns Hopkins School of Medicine, Baltimore, MD
Suad Kapetanovic, MD, NIH/NIMH, Bethesda, MD
Maryland Pao, MD, FAPM, NIH/NIMH, Bethesda, MD
Durga Roy, MD, Johns Hopkins University School of Medicine, Baltimore, MD

S09: Overcoming 'Real-World' Funding Barriers When Developing Integrated Models of Care.....

Track: **PCS** SIG: **COM TEL**

Presenters: Lorin Scher, MD, University of California, Davis, Sacramento, CA
Wayne Katon, MD, FAPM, University of Washington School of Medicine, Seattle, WA
John Kern, MD, Regional Mental Health Center, Merrillville, IN
David Liu, MD, UC Davis, Sacramento County Mental Health, Sacramento, CA
Lori Raney, MD, Axis Health Center, Durango, CO

S10: Bioethical Aspects of Older Adult Healthcare Reform: The Future or Back to the Future? - A Bioethics SIG-sponsored Symposium....

Track: **ETH** SIG: **ETH COM**

Presenters: Talin Dadoyan, MD, Department of Mental Health Los Angeles County, Sherman Oaks, CA
Bennett Blum, MD, Park Dietz and Associates, Inc, Newport Beach, CA
Mary Ann Cohen, MD, FAPM, Mount Sinai School of Medicine, New York, NY
Sarah Gelberd, MD, Department of Mental Health-Los Angeles, Los Angeles, CA
Yara Salman, MD, University of Southern California, Los Angeles, CA
Saba Syed, MD, University of California Los Angeles, Los Angeles, CA

S11: Neuropsychiatric Issues in Solid Organ Transplantation

Track: **NEP** SIG: **TRA MED NEP**

Presenters: Jose Maldonado, MD, FAPM, Stanford University, Stanford, CA
Marian Fireman, MD, FAPM, Oregon Health Science University, Portland, OR
Sersak Lolak, MD, George Washington University, Washington, DC
Yelizaveta Sher, MD, Stanford University, Stanford, CA

PROGRAM TRACKS

CAW	PCS	SCS	ECP	ETH	NEP	SUB	FUT
Child, Adolescent, Women's Health	Collaborative Care in Primary Care Settings	Collaborative Care in Specialty Care Settings	Early Career Psychiatrist	Ethics	Neuropsychiatry	Psychosomatic Medicine's Subspecialties	Psychosomatic Medicine's Future



S12: Psycho-oncology Research and Practice: A Research Committee Symposium..... Indigo

Track: **SUB** SIG: **MED**

Presenters: Michael Sharpe, MD, FAPM, University of Oxford, Oxford, UK

Jesse Fann, MD, FAPM, University of Washington, Seattle, WA

Donald Rosenstein, MD, FAPM, University of North Carolina, Chapel Hill, NC

Jane Walker, MD, University of Oxford, Oxford, UK

S13: What Hath DSM-5 Wrought? Changes in Adjustment Disorders, Somatic Symptom Disorders, and Sexual Disorder Important for the Practice and Research in Psychosomatic Medicine..... Sonoran II

Track: **FUT** SIG: **COM MED NEP PSY**

Presenters: James Strain, MD, Ichan School of Medicine at Mount Sinai, Riverdale, NY

Joel Dimsdale, MD, University of California, San Diego, CA

Ken Zucker, MD, Centre for Addiction and Mental Health, Toronto, ON, Canada

W02: Integrated Care across the Spectrum of Psychiatric Practice: Four Perspectives..... Aster I/II

Track: **SCS** SIG: **COM**

Presenters: Anna Ratcliff, MD, PhD, University of Washington, Seattle, WA

Amy Bauer, MD, University of Washington, Seattle, WA

Hsiang Huang, MD, Cambridge Health Alliance, Cambridge, MA

Jürgen Unützer, MD, University of Washington, Seattle, WA

Erik Vanderlip, MD, University of Washington, Seattle, WA

W03: How to Choose Your First Job: Career Advice for Early Career Psychosomatic Medicine Psychiatrists..... Finger Rock II/III

Track: **ECP** SIG: **ECP**

Presenters: Eliza Park, MD, UNC School of Medicine, Chapel Hill, NC

Divy Ravindranath, MD, Palo Alto VAHCS, Palo Alto, CA

Charles Surber, MD, Brigham and Women's Hospital/Harvard Medical School, Boston, MA

Felicia Wong, MD, Kaiser-Permanente, Los Angeles, CA

◆ 5:00 – 7:00 PM

APM Happy Hour..... Lobby Lounge
Present your APM badge in the AZUL Lounge for discounts

◆ 5:30 – 7:30 PM

Poster Session [2.0 CME]..... Grand Pavilion
See poster titles/authors listed below through page 16

◆ 6:30 – 8:30 PM

Welcome Reception..... Arizona Foyer
Announcement of Best Poster and Best Trainee Poster Awards

◆ 5:30 – 7:30 PM

Poster Session [2.0 CME]..... Grand Pavilion
[T] = Trainee Paper

Alan B. Stoudemire Award for Innovation & Excellence in C-L Education

**Disruptions in Development: A Pioneering Course
for First-Year Medical Students Taught at the
Psychosomatic Interface**

Presenting Author: J. Michael Bostwick

Section A: Cardiology

- Association Between PHQ-9 Score and Adverse Cardiac Outcomes in Patients Hospitalized for Acute Cardiac Disease**
Presenting Author: Scott Beach
Co-Authors: Christopher Celano, Jeff Huffman
- Perceptions of Treatment Predict Quality of Life in Patients with Implantable Cardioverter Defibrillators**
Presenting Author: Kanako Ichikura
Co-Authors: Shiho Matsuoka, Sayaka Kobayashi, Tsuyoshi Suzuki, Katsuji Nishimura, Tsuyoshi Shiga, Shin-ichi Suzuki, Nobuhisa Hagiwara, Jun Ishigooka

- Post-Traumatic Stress Disorder and its Risk Factors in Japanese Patients Living with Implantable Cardioverter Defibrillators**
Presenting Author: Sayaka Kobayashi
Co-Authors: Katsuji Nishimura, Kazue Kuwahara, Tsuyoshi Suzuki, Tsuyoshi Shiga, Morio Shoda, Nobuhisa Hagiwara, Jun Ishigooka
- Heart Rate Variability and Psychological Correlates of Patients with Non-Cardiac Chest Pain: Effects of Treatment**
Presenting Author: Edwin Meresh
Co-Authors: Carmela Cowdrey, Matthew Niedzwiecki, Kathryn Morrissey, Brandon Hage, Aparna Sharma, Angelos Halaris
- [T] An Integrated Model for Longitudinal Care of Patients with Left Ventricular Assist Devices**
Presenting Author: Jennifer Moore
Co-Author: Joseph Locala



6. **Outcome of Cardiac Valve Replacement in Endocarditis with IV Drug Abuse: A Case Report and Literature Review**
Presenting Author: Natalia Ortiz
Co-Authors: Kiran Majeed, Amina Hanif
7. **Withdrawn**
8. **[T] A Model of Cardiologist Communication Strategies with Difficult Patients**
Presenting Author: Dan Zuiches
Co-Authors: Crystal Jimenez, Karen Friday, John Giacomini, Bruce Bongar

Section B: Case Reports

9. **[T] How to Assess for Malingering in the Emergency Room: A Case Example**
Presenting Author: Meredith Caitlin Brady
Co-Author: Lorin Scher
10. **[T] Beyond the Binge: Identifying Other Problematic Eating Behaviors in a Male Bariatric Surgery Candidate**
Presenting Author: Shannon Clark
Co-Authors: Lisa Miller, Eshelman Anne
11. **[T] Management of Major Depression in a Patient with Blood Dyscrasias**
Presenting Author: Erika Concepcion
Co-Authors: Daniel Safin, David Edgcomb, Nancy Maruyama
12. **[T] Acetaminophen Overdose in the Context of Roux-En-Y Gastric Bypass: Implications of Bariatric Surgery On Drug Absorption**
Presenting Author: Renu Culas
Co-Authors: Deniz Eker, Anna Kreiter, Dickson Jean, Daniel Safin, Kenneth Ashley, Nancy Maruyama, Joel Wallack
13. **[T] Fatal Apathy: A Case Report and Review of Abulia, Apathetic Indifference and Amotivation in a Young Man with Diabetic Ketoacidosis and Insulin Noncompliance**
Presenting Author: Dustin DeMoss
Co-Author: James McConville
14. **Malignant Catatonia or Neuroleptic Malignant Syndrome, a Diagnostic Dilemma**
Presenting Author: Zeeshan Faruqui
Co-Authors: Joshua Chandy, Rachna Raisinghani, Abdel Meguid, Alexandru Trutia
15. **[T] A Case of Natalizumab Induced Depression and Acute Suicidality in a Patient with Crohn's Disease**
Presenting Author: Kyle Lavin
Co-Author: Stephen Nicolson

16. **[T] Bad Voodoo: A Case Report of Acute Hyponatremic Psychosis in a New Orleanian Faith Healer**
Presenting Author: James McConville
Co-Authors: Robert Harvey, Lily Ngotran
17. **[T] Escitalopram-Induced Progressive Cervical Dystonia**
Presenting Author: Robert Morgan
Co-Author: Tamara Dolenc
18. **[T] Case Report: Chronic Lithium Toxicity Following Roux-En-Y Gastric Bypass Surgery**
Presenting Author: Harsha Mudrakola
Co-Author: Josephine Mokonogho
19. **[T] Challenges of Non-Psychiatric Psychosis: A Case Report**
Presenting Author: Padmapriya Musunuri
Co-Authors: Gibson George, Ajita Mathur, Carolina Retamero
20. **Psychotic Syndrome After Starting Antiretroviral Therapy: A Case Report**
Presenting Author: Ricard Navinés
Co-Authors: Aracelli Rousaud, José Moreno-España, Jordi Blanch
21. **[T] Zolpidem-Induced Galactorrhea Via Gabaergic Inhibition of Dopamine: A Case Report**
Presenting Author: Daniella Palermo
Co-Author: Adekola Alao
22. **Bipolar with Psychosis Secondary to Atripla: A Case Report**
Presenting Author: Stefani Parrisbalogun
23. **[T] Body Integrity Identity Disorder: A Case Report**
Presenting Author: Rachna Raisinghani
Co-Authors: Christopher Helfer, Zeeshan Faruqui, James Levenson
24. **[T] Psychotic Process, Due to an Unlikely General Medical Condition**
Presenting Author: Waqar Rizvi
Co-Authors: Rajasekhar Kannali, Toni Love Johnson
25. **Quick Resolution of High Lethality Suicidal Behavior and Depression After Administration of Single Low Dose Ketamine IV Push**
Presenting Author: Ricardo Salazar
Co-Author: Sabitha Aligeti
26. **[T] Folie À Deux on the Consultation-Liaison Psychiatry Service: Who's Fooling Who?**
Presenting Author: Rita Schlanger
Co-Authors: Karen Salerno, Margo Funk
27. **[T] Catatonia in Resource Limited Settings: A Case Series of Four Patients**
Presenting Author: Stephanie Smith
Co-Authors: David Grelotti, Eugenie Uwimana, Jean-Sauveur Ndikubwimana, Dominiq Dushimiyimana, Clemence Uwamariya, Robert Bienvenu, Giuseppe Raviola, Gregory Fricchione



28. [T] **Psychosis and Mood Changes Due to Adipex (Phentermine) Use: Case Report and Literature Review**
Presenting Author: Samidha Tripathi
Co-Author: Carolina Retamero

29. [T] **Catatonia? Conversion Disorder? A Case of Cerebral Fat Emboli**
Presenting Author: Barbara Wilson
Co-Author: Julia Frew

Section C: Delirium

30. [T] **Zany on Zannie: Delirium Induced by a Benzodiazepine Marketed as Air Freshener**
Presenting Author: Ashhar Ali
Co-Authors: Jason Jerry, Elias Khawam

31. [T] **Rates of Delirium of Patients with Psychiatric Illness: A Retrospective Review of Psychiatric Consults From 2010 to 2012**
Presenting Author: Kang Won Choi
Co-Authors: Hoyle Leigh, Ronna Mallios

32. [T] **An Irreversible Delirium: Pushing the Envelope for Goals of Care Within the Islamic Bioethical Framework**
Presenting Author: Sonia Demetrios
Co-Authors: Waqar Rizvi, Mallika Iavakumar

33. **Withdrawn**

34. [T] **Chronobiology in Delirium and Critical Illness: The Role of Chronotherapeutics in Psychosomatic Medicine**
Presenting Author: Mark Oldham
Co-Author: Paul Desan

35. [T] **Citation Classics in Delirium**
Presenting Author: Adam Pendleton
Co-Author: Jason Caplan

36. **Delirium: A Cross-Sectional Study Examining Prediction, Identification and Symptom Severity in Surgical Patients**
Presenting Author: Carole Richford
Co-Authors: Peggy Simpson, Stephen Fitzpatrick, Maria Corral, Julia Raudzus, Grant Millar

37. **Prevention, Identification and Nursing Management of Delirium: A Knowledge Translation Project**
Presenting Author: Peggy Simpson
Co-Authors: Carole Richford, Stephen Parker

38. [T] **Delirium in General Surgery Patients: A Systematic Review of Predictors, Prevention and Treatment**
Presenting Author: Mohit Singh
Co-Authors: Carole Richford, Peggy Simpson

39. **Withdrawn**

Section D: Neuropsychiatry

40. **Biological Basis of Conversion Disorder: Lack of Distractibility**
Presenting Author: Kemal Arikan
Co-Author: Burc Cagri Poyraz

41. **Caplan's Sign: A Retrospective Study of Polyallergy as a Marker of Non-Epileptic Events in the Epilepsy Monitoring Unit**
Presenting Author: Jason Caplan
Co-Authors: John Bokma, Kristina Chapple, James Park

42. [T] **Blink: the Power of a Paraneoplastic Syndrome**
Presenting Author: Richard Carlson
Co-Author: Amanda Wilson

43. [T] **Assessing Psychosis in Deaf Patients**
Presenting Author: Priyanka Deshmukh
Co-Author: Raman Marwaha

44. **Withdrawn**

45. [T] **Unintentional Injuries in Patients with Dementia: Hospital Course and Outcomes**
Presenting Author: Elizabeth Gilbert
Co-Authors: Daithi Heffernan, Colin Harrington

46. [T] **Dementia with Lewy Body Presenting with Delusion of Parasitosis**
Presenting Author: Mencia Gómez De Vargas
Co-Authors: Ali Khadivi, Yonas Geda

47. [T] **Psychiatric Manifestations of CLIPPERS (Chronic Lymphocytic Inflammation with Pontine Perivascular Enhancement Responsive to Steroids)**
Presenting Author: Daniel Hosker
Co-Authors: Ian Steele, Dylan Kathol, Nathaniel Barusch, Lance Rouse, Jason Caplan

48. [T] **Temporal Seizure Focus Presenting with Psychosis: A Case Report and Literature Review**
Presenting Author: Walter Kilpatrick
Co-Authors: Cameron Bonney, Daniel Price

49. [T] **Case Report: Mania with Psychotic Features Status Post Right Temporal Lobectomy**
Presenting Author: Ah Young (Nora) Kim
Co-Authors: Maria Theresa Mariano, Biswarup Ghosh

50. [T] **First Episode Psychosis Diagnosed with Neuropsychiatric Systemic Lupus Erythematosus (NPSLE) During Psychiatric Hospitalization: Case Report and Literature Review**
Presenting Author: Subani Maheshwari
Co-Authors: Adele Veksman, Christopher Burke



51. [T] **A Case of Factitious Disorder Presenting as Advanced Parkinson's Disease**
Presenting Author: Aileen Park
Co-Author: Maria Fernanda Gomez
52. **Inflammation and Psychosomatic Medicine**
Presenting Author: Lisa Rosenthal
Co-Authors: Robert Weinrieb, Robert Brett Lloyd, Christian Kohler, Nicholas Tsopelas
53. [T] **Escitalopram Monotherapy Reduces the Syntheses of Neurotoxic Metabolites in the Serum of Patients with Major Depression**
Presenting Author: Vidushi Savant
Co-Authors: Angelos Halaris, Aye-Mu Myint, Edwin Meresh, Guilles Guillemin, James Sinacore
54. [T] **Quetiapine Monotherapy Reduces Neurotoxic Metabolite of the Kynurenine Pathway in Patients with Major Depression**
Presenting Author: Vidushi Savant
Co-Authors: Angelos Halaris, Aye-Mu Myint, Edwin Meresh, Gilles Guillemin, James Sinacore
55. [T] **Late-Onset, Cholinesterase Inhibitor-Induced Bipolar Illness**
Presenting Author: Samuel Sostre
Co-Authors: Yasmeen Abdul-Karim, Ankur Patel, Mahreen Raza
56. **Psychosis Following Left Thalamic Stroke**
Presenting Author: Samuel Sostre
Co-Author: Gily Chechel
57. [T] **Management of Psychiatric Symptoms in Anti-NMDAR Encephalitis: A Case Series and Literature Review**
Presenting Author: Christopher Takala
Co-Authors: Preetha Kuppaswamy, Christopher Sola
58. [T] **Delusional Parasitosis Secondary to Peripheral Neuropathy and Cognitive Impairment Treated with Gabapentin: A Case Report**
Presenting Author: Paul Thisayakorn
Co-Author: James Amos
59. [T] **Central Pontine Myelinolysis (CPM): A Serious Consequence of Chronic Alcoholism**
Presenting Author: Priya Vaidya Shrestha
Co-Authors: Aasia Syed
60. **Marchiafava-Bignami Disease (MBD): A Radiologically Identifiable Cause of White Matter Cortical Degeneration Presenting as Cognitive Impairment**
Presenting Author: Mitzi Wasserstein
Co-Authors: Thomas Beresford, Adam Chin, Abby Ornelos-Lozano

[T] = Trainee Paper

61. [T] **Catatonia Caseness: Defining an Elusive Condition**
Presenting Author: Jo Ellen Wilson
Co-Author: Stephan Heckers
62. **Testing the Use of Standardized Scripts for Disclosing 'Hypothetical/Mock' Amyloid PET Scan Results to Nondemented Cognitively-Impaired Patients and Their Care Partners**
Presenting Author: Michael Witte
Co-Authors: Janet Barnes, Jennifer Lingler, Marc Agronin, Helen Hochstetler, Kristine Healey, Ann Hake, Paula Trzepacz

Section E: Pediatrics and Women's Health

63. [T] **Psychotic Denial of Pregnancy: A Case Report and Review of Literature**
Presenting Author: Md. Ashik Ansar
Co-Author: Carolina Retamero
64. [T] **When to Involuntarily Commit in Anorexia Nervosa: A Case Report and Discussion**
Presenting Author: Melanie Barrett
Co-Authors: Sheryl Fleisch, Jennifer Richards, Maria La Via, Elena Perea
65. **Depression, Anxiety, and Quality of Life in Hospitalized High Risk Obstetrical Patients**
Presenting Author: Nancy Byatt
Co-Authors: Katherine Hicks-Courant, Autumn Davidson, Ruth Levesque, Gina Zarella, Eric Mick, Tiffany Moore Simas
66. [T] **Presenting Symptoms of Women with Depression in an Obstetrics-Gynecology Setting**
Presenting Author: Joseph Cerimele
Co-Authors: Erik Vanderlip, Carmen Croicu, Jennifer Melville, Joan Russo, Susan Reed, Wayne Katon
67. **We Heard That She Died: Legends of a Pregnant Foreign Body Ingestor with Borderline Personality Disorder**
Presenting Author: Syma Dar
Co-Author: Carrie Cichocki
68. **Impact of Shared Medical Appointments in Women with Depression and Anxiety**
Presenting Author: Lilian Gonsalves
Co-Authors: Jerilyn Hagan-Sowell, Yvonne Chasser
69. [T] **Is My Baby Going to Be Okay? A Review of Fetal Outcomes After Maternal Overdose**
Presenting Author: Dylan Kathol
Co-Authors: Nathaniel Barusch, Daniel Hosker, Ian Steele, Jason Caplan
70. **Prenatal Mental Health Treatment and Pregnancy Outcome**
Presenting Author: Stephanie Kohler-Neuwirth
Co-Author: Christina Wichman



71. Withdrawn

72. **The Path from Childhood Maltreatment to Somatic Symptoms: Defining the Mediators**

Presenting Author: David Lovas
Co-Author: Martin Teicher

73. [T] **Chronic Pelvic Pain and Somatoform Disorders: A Case of a Woman with Non-Epileptic Seizures**

Presenting Author: Margaret May
Co-Authors: Yelizaveta Sher, Nadia Haddad, Jose Maldonado

74. **Transferring HIV-Infected Adolescents to an Adult Outpatient Clinic: Implementation of a Standardized Protocol**

Presenting Author: Araceli Rousaud
Co-Authors: Jordi Blanch, Ricard Navines, Montse Lonca

75. **Challenges to Integrate Mental Health Care into the New Primary Care Model in Brazil: A Low Cost, Task-Shifted Management Program for Depressed Pregnant Women in Primary Health Care in Sao Paulo, Brazil**

Presenting Author: Marcia Scazufca
Co-Authors: Alexandre Curi, Monica Mogadouro, Ariete Ramirez, Silvia Fenerich, Simone Almeida, Julieta Quayle, Luiz Dangelo, Renata Santos, Ricardo Araya, Paulo Menezes

76. [T] **Factors Associated with Medication Adherence in Youth with Bipolar Disorder**

Presenting Author: Loren Sobel
Co-Authors: Rachael Fersch-Podrat, Nina Hotkowski, Matthew Garcia, David Axelson, Boris Birmaher, Antoine Douaihy, Tina Goldstein

77. [T] **Methamphetamine Abuse in Pregnant Women: A Review of Psychosocial Factors and Demographics**

Presenting Author: Ian Steele
Co-Authors: Daniel Hosker, Nathaniel Barusch, Dylan Kathol, Jason Caplan

78. [T] **Neuropsychiatric Aspects of Anti-NMDA Receptor Encephalitis in Pediatric Patients**

Presenting Author: Susan Turkel
Co-Authors: Matt Lallas, Jay Desai, Sheryllence Ignacio

Section F: Psycho-oncology and Palliative Medicine

79. [T] **The Psychological Impact of Cervical Cancer Screening on Woman from Two Northern Indian Villages**

Presenting Author: Kokil Chopra
Co-Authors: Shashi Prateek, Alexander Thompson, Surveen Ghumman, Kapil Chopra

80. **Establishing End-Of-Life Wishes of Patients with Guardians: Developing a Standard**

Presenting Author: Elizabeth Davis
Co-Author: Rebecca Weintraub Brendel

81. **A Pilot Study to Evaluate Symptom-Oriented Selection of Antidepressants in Patients with Cancer**

Presenting Author: Eliza Park
Co-Authors: Ryan Raddin, Robert Hamer, Kelly Nelson, Deborah Mayer, Stephen Bernard, Donald Rosenstein

82. **Assessing Quality in Psycho-Oncology**

Presenting Author: Sarah Parsons
Co-Authors: Elizabeth Archer-Nanda, Schuermeyer Isabel, Crenshaw Marisa

83. [T] **Why Do You Want to Stop Dialysis?: Impact of Chronic Pain On Dialysis Withdrawal: A Case Report**

Presenting Author: Piyapon Thisayakorn
Co-Authors: Paul Thisayakorn, Michelle Weckmann

84. [T] **Palliative Care and Hospice Collaboration in Management of a Medical Psychiatry Patient**

Presenting Author: Piyapon Thisayakorn
Co-Authors: Paul Thisayakorn, Michelle Weckmann

Section G: Psychopharmacology and Substance Abuse

85. [T] **False Positive Results on Urine Drug Screening: A Review**

Presenting Author: Nathaniel Barusch
Co-Authors: Dylan Kathol, Ian Steele, Daniel Hosker, Jason Caplan

86. [T] **Aseptic Meningitis Following Illicit Substance Ingestion**

Presenting Author: Rebecca Bauer
Co-Author: Christina Wichman

87. **The Many Safe and Effective Uses of Clonidine and the Clonidine Patch: From Opiate Withdrawal to PTSD and Agitation**

Presenting Author: Bradford Bobrin

88. **Two Day, 16mg Suboxone Opiate Detoxification Regimen**

Presenting Author: Bradford Bobrin

89. [T] **HLA Genotyping in Carbamazepine-Induced Cutaneous Reactions**

Presenting Author: Jason Caplan
Co-Authors: Ryan Trowbridge, Benjamin Lockshin, Mario Mitkov

90. **Attitudes Towards Antidepressant and Antianxiety Medications in Inpatients on General Medical Units**

Presenting Author: Paul Desan
Co-Authors: Andrea Weinstein, Sara Gostoli

91. [T] **Olanzapine-Induced Sialorrhea**

Presenting Author: Rajasekhar Kannali
Co-Authors: Waqar Rizvi, Howard Gottesman, Mallika Lavakumar



92. [T] **Paradoxical Side Effects of Olanzapine**
Presenting Author: Anbreen Khizar
Co-Authors: Humaira Shoaib, Rashi Aggarwal
93. [T] **CYP2C19 Variation, Citalopram Dose and QTc Prolongation on Electrocardiogram**
Presenting Author: Yingying Kumar
Co-Authors: Simon Kung, David Mrazek, Gen Shinozaki
94. [T] **Short-Term Mortality and Morbidity After Surgery for Patients Prescribed Anxiolytic and Antidepressant Medication**
Presenting Author: Clark Lester
Co-Authors: Karen Lommel, Lori Mutiso, Daniel Davenport
95. **Pain and the City: Observational Evidence that Urbanization and Neighborhood Deprivation are Associated with Escalation in Chronic Analgesic Treatment**
Presenting Author: Carsten Leue
96. [T] **Somatic Symptoms as Indicators of Potential Endophenotypes in Bipolar Spectrum Disorders: A Proof of Concept Study Comparing Bipolar II Disorder with Recurrent Brief Depression and Healthy Controls**
Presenting Author: Hans Lövdahl
Co-Authors: Erlend Bøen, Eva Malt, Ulrik Malt
97. [T] **Associations Between HIV Progression and Substance Use, Alcohol Use and History of Trauma**
Presenting Author: Constanza Martinez-Pinanez
Co-Authors: Ramaswamy Viswanathan, Kashmira Rustomji, Jameela Yusuff, Sophia Gibbs-Cohen, Stephen Goldfinger
98. [T] **Substance Induced Panic Attacks and Hypomania From Selegiline and Phenylethylamine**
Presenting Author: Alastair McKean
Co-Authors: Folabo Dare, Christopher Sola, Kathryn Schak
99. [T] **Antidepressants and Bruxism: Review of Literature**
Presenting Author: Natalia Ortiz
Co-Author: Harvinder Singh
100. **Serotonin Syndrome Following Discontinuation of Clozapine: A Case Report and Review of the Literature**
Presenting Author: Elena Perea
101. **Hyperprolactinemia as the Most Important Single Determinant of Sexual Dysfunction in Schizophrenia**
Presenting Author: Burc Cagri Poyraz
Co-Authors: Cana Aksoy Poyraz, Armagan Ozdemir, Kemal Arkan
102. [T] **Correlation Between Chronic Pain and Depression in Veterans with PTSD Versus Those Without PTSD in a Clinical Population**
Presenting Author: Jose Ribas Roca
Co-Authors: Nagy Youssef, Srini Pyati

103. [T] **Increasing Incidence of Misdiagnosis of Psychiatric Disorders with Rising Use of Levetiracetam – A Thought to Address?**
Presenting Author: Susana Sanchez
Co-Authors: Mahreen Raza, Rashi Aggarwal
104. [T] **Support for the Use of Clozapine in the Treatment of Psychogenic Polydipsia in a Non-Psychotic Patient: A Case Study**
Presenting Author: Amanda Spray
Co-Authors: Inci Bijan, Brian Bronson
105. [T] **It's Not Always a Good Idea to 'Pump It' Up**
Presenting Author: Jamie Vizcarra
Co-Author: Alao Adekola
106. [T] **Psychosis by Design: Considering the Effects of Synthetic Cathinones and Cannabinoids**
Presenting Author: Gerald Winder
Co-Authors: Bradley Stilger, Avinash Hosanagar

Section H: Systems Based Practice

107. **Are Patients with Severe and Persistent Mental Illness Responsible for the Perpetration of Violence Towards Care Providers on Medical-Surgical Floors? A Retrospective Chart Review**
Presenting Author: Kristine Beard
Co-Author: Lisa Seyfried
108. [T] **Feasibility of Medical Monitoring in a Community Psychiatry Clinic**
Presenting Author: Hannah Brown
Co-Authors: Sarah MacLaurin, David Henderson, Oliver Freudenreich
109. [T] **Development and Implementation of a Standardized Alcohol Withdrawal Protocol for Psychiatric Inpatients**
Presenting Author: Michael Butterfield
Co-Authors: Nicole Herschenhou
110. **Vitamin D Deficiency and Depression in Primary Care Patients**
Presenting Author: Yi Cai
Co-Authors: Maria Lapid, Steven Cha, Paul Takahashi
111. **Positive Psychological States in Diabetes: Impact, Mechanisms, and Potential Treatment Targets**
Presenting Author: Christopher Celano
Co-Authors: Eleanor Beale, Shannon Moore, Jeff Huffman
112. **Collaborative Care with a Trauma Center Surgery Service: Assessing and Reducing Risk of Violent Re-Injury Among Victims of Urban Violence**
Presenting Author: Erich Conrad
Co-Authors: John Nanney, Joseph Constans
113. **Family Centered Care for Traumatically Injured Patients: Lessons Learned From Combat Injured Families**
Presenting Author: Stephen Cozza
Co-Authors: Allison Holmes, Susan Van Ost



- 114. [T] Mental Health Access and Care Transition Challenges in the Primary Care Population: Results of a Pilot Psychiatric Assessment and Care Transition (PACT) Clinic**
Presenting Author: D. Edward Deneke
Co-Authors: Thomas Fluent, Lindsey Mortenson
- 115. Collaborative Approach Utilizing Behavioral Activation to Treat Pain and PTSD in Returning Veterans**
Presenting Author: Steven Dobscha
Co-Authors: Mary Lu, Travis Lovejoy, Andrea Karl, Jane Plagge
- 116. Comparison of Compliance by Medical and Psychiatric Patients Presenting to an Emergency Department**
Presenting Author: Lavonne Downey
- 117. Improving Mental Health Screening for Youth with Epilepsy, an Increase Coordination of Care Strategy to Improve Quality of Life**
Presenting Author: Tatiana Falcone
Co-Authors: Elia Pestana, Jane Timmons-Mitchel, Prakash Kotagal
- 118. Assessment of Psychiatric Morbidity and General Health in a Civilian Population Before and After a War in Lebanon**
Presenting Author: Laila Farhood
- 119. [T] Health Promotion and Risk Behaviors in Bipolar Patients: Perception of Effects On Bipolar Illness**
Presenting Author: Patrick Hou
Co-Authors: Nancy Maruyama, Anna Kreiter
- 120. [T] Adherence to Treatment Advice by Consultees: Direct Communication As a Factor**
Presenting Author: Hussam Jefee Bahloul
Co-Author: Abishek Rizal
- 121. [T] When Patients Ask to Leave AMA: Misuse of Psychiatric Civil Commitment in General Hospitals**
Presenting Author: Tiwalola Kolawole
Co-Author: Mallika Lavakumar
- 122. [T] Health Screening Rates in Bipolar Patients Compared to National Norms**
Presenting Author: Anna Kreiter
Co-Authors: Stephanie Cheung, Nancy Maruyama
- 123. [T] Five-Year Evaluation of Consultation-Liaison Psychiatry Referrals in a Tertiary Medical Center**
Presenting Author: Jeanne Lackamp
Co-Authors: Pu Cheng
- 124. [T] Characteristics and Outcomes of Suicidal Patients Referred to a Psychosomatic Medicine Consultation Service**
Presenting Author: Vicente Liz
Co-Authors: Maria Perez Coste, Victoria Paz, Hamad Mohsin, Dora Duque, Ali Khadivi

- 125. [T] Do Non-Psychiatric Care Providers Also Have the 'Duty to Protect'?**
Presenting Author: Rachna Raisinghani
Co-Author: James Levenson
- 126. A Decade of Early Intervention for Psychiatric Patients in Hospital Emergency Rooms by a Behavioral Health Intake Team**
Presenting Author: Vani Ray
Co-Authors: Joy Mead-Meucci, Mary Pelter, Maharaj Singh
- 127. [T] The Fallacy of 'Medical Clearance'**
Presenting Author: Carolina Retamero
Co-Authors: John Kelly, Yen-Hua Yu
- 128. Identifying the Costs and Treatment Patterns of Depression with Fatigue and Other Common Symptoms**
Presenting Author: Rebecca Robinson
Co-Authors: Judith Stephenson, Ellen Dennehy, Douglas Faries, Michael Grabner, Swetha Rao Palli, Ralph Swindle
- 129. Proposal for a Psychosomatic Database in the EPIC EMR**
Presenting Author: Akhil Shenoy
Co-Authors: Kim Klipstein, Carrie Ernst, James Strain
- 130. [T] Did You Even Read My Note?: Inaccurate Documentation of Psychiatric Consultations by Consultees May Lead to Medical Errors**
Presenting Author: David Sheski
Co-Author: Saba Syed
- 131. It's Good That the Group Is Here – an Evaluation of a Psycho-Social Group to Support Engagement with HCV Treatment**
Presenting Author: Sanjeev Sockalingam
Co-Authors: Zoe Dodd, Kate Mason, Christopher Meaney, Molynd Leszcz

132. Withdrawn

Section I: Training and Education

- 133. [T] Watch and Learn: the Use of Video Vignettes as an Assessment Tool on the Psychosomatic Service**
Presenting Author: Marley Doyle
Co-Authors: Carolyn Aufferberg, Lisa Rosenthal, Robert Lloyd
- 134. [T] Physical Examination and Psychiatry Residents: Issues and Opportunities for Change**
Presenting Author: Madhavi Latha Nagalla
Co-Author: Michelle Riba
- 135. Psychosomatic Medicine Training as a Bridge to Practice: Training and Professional Practice Patterns of Early Career Psychosomatic Medicine Specialists**
Presenting Author: Eliza Park
Co-Authors: Divy Ravindranath, Patrick Aquino, Jonathan Gerkin, Sarah Francis Nemeroff, Sanjeev Sockalingam



136. Practice and Career Choices of Female Consultation Liaison Psychiatrists in Ohio
Presenting Author: Stefani Parrisbalogun
Co-Authors: Jeanne Lackamp, Marianne Jhee, Sarah Nagle

137. Meeting the Continuing Education Needs in Behavioral Health for Advanced Practice Providers
Presenting Author: Sarah Rivelli
Co-Authors: Virginia O'Brien, Marvin Swartz

138. The Other Side of the Mirror: A Medical Student's Perspective on Psychosomatic Medicine Rotation
Presenting Author: Guitelle St. Victor
Co-Authors: Madhavi Latha Nagalla, Damir Huremovic

139. Withdrawn

140. The Birth of a Teaching Service in the Wake of Hurricane Sandy
Presenting Author: Elyse Weiner
Co-Author: Brian Bronson

141. Can Psychiatric Residents be Effectively Integrated Into a Telemedicine Primary Care Collaborative?
Presenting Author: John Wells

Section J: Transplant

142. Face Transplantation: Psychological Outcomes at Year Four
Presenting Author: Kathy Coffman
Co-Author: Maria Siemionow

143. [T] Demographic and Pretransplant Factors Associated with Interest, Knowledge, and Concerns About Living Kidney Donation
Presenting Author: Monica DeFeo
Co-Authors: Mencia Gomez, Patricia McDonough

144. Should We Transplant Patients with Fulminant Liver Failure From 'Unintentional' Acetaminophen Overdose?
Presenting Author: Anne Eshelman

145. [T] Comparison of Two Hospital Educational Approaches to Increase Live Donor Kidney Transplantation Amongst Minorities
Presenting Author: Mencia Gómez De Vargas
Co-Authors: Aws Aljanabi, Carmen Velez, Liise Kayler, Monica DeFeo, Patricia McDonough, Paula Marcus

146. Psychosocial, Ethical and Medical Issues in a Multiple Liver Transplant Recipient Seeking Another Liver Transplant
Presenting Author: Shehzad Niazi
Co-Authors: Andrew Keaveney, Adriana Vasquez, Maria Yataco, Terry Schneekloth, Sheila Jowsey, Teresa Rummans

147. [T] Factitious Disorder in a Patient with Small Bowel Transplant
Presenting Author: Neil Puri

148. Substance Abuse and Hematopoietic Progenitor Cell Transplantation
Presenting Author: Isabel Schuermeyer
Co-Authors: Michele Cooper, Ronald Sobecks

149. An Insatiable Desire for Tofu: A Case of Anxiety and Restless Legs Triggered by Microcytic Anemia in a Transplant Patient
Presenting Author: Yelizaveta Sher
Co-Author: Jose Maldonado

150. Depressive Symptoms Patients with Immunoglobulin Monoclonal Light Chain Amyloidosis Undergoing Stem Cell Transplantation
Presenting Author: Janet Shu
Co-Authors: John Berk, David Seldin

151. [T] Psychopathology in Pancreas Transplant Recipients: A Review of 158 Cases
Presenting Author: Erin Sterenson
Co-Authors: Ajay Parsaik, Yogish Kudva, Terry Schneekloth, Sheila Jowsey, Teresa Rummans, Tamara Dolenc

152. Withdrawn

153. Donor Satisfaction in Living-Kidney Transplantation From Donors Related to the Recipients—Part 1: After Donation, How Do Donors View Factors Associated with Decisions Involved in Donation?
Presenting Author: Junko Tsutsui
Co-Authors: Sayaka Kobayashi, Katsuji Nishimura, Sachi Okabe, Yoshie Okada, Hideki Ishida, Kazunari Tanabe, Jun Ishigooka

154. Donor Satisfaction in Living-Kidney Transplantation From Donors Related to the Recipients—Part 2: Associated Factors
Presenting Author: Katsuji Nishimura
Co-Authors: Sayaka Kobayashi, Junko Tsutsui, Sachi Okabe, Yoshie Okada, Hideki Ishida, Kazunari Tanabe, Jun Ishigooka

155. Symptoms of Eating Disorder in Liver Transplant Recipients
Presenting Author: Paula Zimbrea
Co-Author: Sukru Emre



◆ 6:15 – 7:00 AM	Mindfulness Meditation with Paul Jones, MD Ironwood
◆ 6:15 – 7:00 AM	Neighborhood Run Meet in hotel lobby
◆ 6:30 AM – 7:00 PM	Registration Desk Open Lobby Foyer
◆ 7:00 – 8:00 AM	APM Committee Meetings See page 29 Continental breakfast served for committee members
◆ 8:00 – 9:00 AM	APM Special Interest Group Meetings See page 29 Continental breakfast served for SIG members
◆ 8:30 AM – 5:00 PM	Exhibits Open Arizona Foyer
◆ 9:00 – 9:15 AM	Light Refreshments Arizona Foyer
◆ 9:15 – 9:30 AM	Announcements Arizona Ballroom

◆ 9:30 – 10:30 AM	Plenary Session 2 [1.0 CME] Arizona Ballroom <i>Introduction by:</i> Wayne Katon, MD, FAPM
-------------------	--



◆ **Somatic Symptoms as a Bridge between the Brain and the Body**

Kurt Kroenke, MD, MACP

Chancellor's Professor of Medicine, Indiana University School of Medicine Research Scientist, Regenstrief Institute and VA HSR&D Center for Health Information and Communication, Indianapolis, IN

◆ 10:30 – 10:40 AM	Break
--------------------	--------------

◆ 10:40 AM – 12:40 PM	8 Concurrent Oral Paper Sessions, incl. Webb Fellow Presentations [2.0 CME]
-----------------------	--

SESSION A:
COMMON CLINICAL SITUATIONS Aster I/II

Moderator/Discussant: J. Michael Bostwick, MD, FAPM

Capacity Evaluations & Pregnancy: A Case Series and Review of the Literature

Presenting Author: Laura McLafferty, MD
Co-Authors: Priya Gopalan, Jody Glance

Clinical Outcomes After Acetaminophen Overdose: A Review of 300 Consecutive Cases

Presenting Author: Tamara Dolenc, MD
Co-Authors: Nuria Thusius, J. Michael Bostwick

Identifying Anxiety and Depression in Cardiac Patients: the Results of Systematic Screening

Presenting Author: Christopher Celano, MD
Co-Authors: Laura Suarez, Andres Caro, Gillian Sowden, Carol Mastromauro, Jeff Huffman

Meta-analysis of Selective Serotonin Reuptake Inhibitor (SSRI)-associated QTc Prolongation

Presenting Author: Scott Beach, MD
Co-Authors: William Kostis, Christopher Celano, James Januzzi, Jeremy Ruskin, Peter Noseworthy, Jeff Huffman

Routine Suicide Screening in Triage of an Urban Academic Emergency Department does not Identify All Critical Cases

Presenting Author: Cheryl McCullumsmith, MD, PhD
Co-Authors: Stephan Meadors, Joseph Carley

The Association of Polymorphisms in Corticotrophin-Releasing Hormone Genes with Symptoms of Posttraumatic Stress Disorder and Depression in Medical-surgical Intensive Care Unit Survivors

Presenting Author: Dimitry Davydow, MD
Co-Authors: Ruth Kohen, Douglas Zatzick, Catherine Hough, Wayne Katon

**SESSION B: DELIRIUM** Indigo

Moderator/Discussant: Thomas Heinrich, MD, FAPM

Prospective Validation Study of the Prediction of Alcohol Withdrawal Severity Scale (PAWSS): A New Scale for the Prediction of Moderate to Severe Alcohol Withdrawal in Medically Ill Patients

Presenting Author: Jose Maldonado, MD, FAPM

Co-Authors: Yelizaveta Sher, Kelsey Hills-Evans, Heavenly Swendsen, Rachael Talley, Sermak Lolak, Anne Catherine Miller, Judith Ashbouri

Postoperative Subsyndromal Delirium Predicts Development of Full Delirium and Increases Length of Hospital Stay

Presenting Author: J. Jewel Shim, MD, FAPM

Co-Authors: Glen DePalma, Laura Sands, Jacqueline Leung

Current Practices in the Management of Delirium in Critically Ill Patients: A Report of APM Critical Care SIG Survey

Presenting Author: June Cai, MD

Co-Authors: J.J. Rasimas, O. Joseph Bienvenu, Inna D'Empaire, Dmitry Davydow

Team Based Delirium Care Training: A Systematic Review of the Literature and Recommendations

Presenting Author: Sanjeev Sockalingam, MD, FRCPC

Co-Authors: Adrienne Tan, Raed Hawa, Susan Abbey, Brian Hodges

David and Goliath: CL Psychiatry and the Current State of Delirium Awareness, Prevention and Management

Presenting Author: Leo Pozuelo, MD, FACP, FAPM

Co-Authors: Mariela Herrera-Rojas, Manfred Baumgartner, Debra Kangisser

SESSION C: NEUROPSYCHIATRY Verbena

Moderator/Discussant: Jason Caplan, MD, FAPM

In-Hospital Acute Stress Symptoms are Associated with Poorer Cognitive Functioning One Year after Medical-Surgical Intensive Care Unit Admission

Presenting Author: Dmitry Davydow, MD

Co-Authors: Douglas Zatzick, Catherine Hough, Wayne Katon

A Randomized Controlled Trial of Telephone and In-Person Cognitive Behavioral Therapy for Major Depression after Traumatic Brain Injury

Presenting Author: Jesse Fann, MD, FAPM

Co-Authors: Charles Bombardier, Steven Vannoy, Joshua Dyer, Evette Ludman, Kenneth Marshall, Jason Barber, Nancy Temkin

Comparison of Florbetapir Positron Emission Tomography Scans with Cerebrospinal Fluid Biomarkers in Healthy Control, Mild Cognitive Impairment, or Demented Alzheimer's Disease Subjects

Presenting Author: Paula Trzepacz, MD, FAPM

Co-Authors: Ann Hake, Peng Yu, Shufang Wang, Michael Case, Helen Hochstetler, Michael Witte, Robert Dean

Psychiatric Manifestations and Management of Anti-NMDA Receptor Encephalitis

Presenting Author: Jennifer Kruse, MD

Co-Authors: Jessica Jeffrey, Michael Davis, John Brooks

Psychological Profiles of Patients with Behavioral Spells and Treatment Resistant Epilepsy: Identifying Targets for Cognitive and Behavioral Symptom Management

Presenting Author: Danielle Koby, PhD

Co-Authors: Jackie Micklewright, Marietta Hoogs, Emily Necrason, Greg Worrell, Richard Seime, Max Trenerry, Jeffrey Staab, Kristin Vickers-Douglas

Venlafaxine XR for Major Depression and Pain after Spinal Cord Injury: A Multi-site Randomized Controlled Trial

Presenting Author: Jesse Fann, MD, FAPM

Co-Authors: Charles Bombardier, J. Scott Richards, Allen Heinemann, Catherine Wilson, Ann Marie Warren, Lawrence Brooks, Nancy Temkin, Denise Tate

**SESSION D:****PHYSICAL SYMPTOMS & HEALTH**.....Lantana

Moderator/Discussant: David Katzelnick, MD

A Psychiatric Consultant's Field Guide For Creating Behavioral Plans: The NEEDS MET Method

Presenting Author: Kathryn Norfleet, MD

Co-Author: Alexander Thompson

A Randomized Controlled Trial of CBT vs Fluoxetine vs Placebo vs Joint Therapy for Hypochondriasis

Presenting Author: Brian Fallon, MD

Co-Authors: Arthur Barsky, David Ahern, Martina Pavlicova, Jordan Slavov

Associations Between Antidepressant Adherence and Patient-Provider Trust, Shared Decision-Making, and Communication Among Adults with Diabetes: Diabetes Study of Northern California (DISTANCE)

Presenting Author: Amy Bauer, MD

Co-Authors: Melissa Parker, Wayne Katon, Nancy Adler, Alyce Adams, Howard Moffett, Dean Schillinger, Andrew Karter

Cognitive-behavioral Group Treatment for a Range of Functional Somatic Syndromes: Lessons learned from the STreSS-1 Trial

Presenting Author: Andreas Schröder, MD, PhD

Multiple Medically Unexplained Symptoms and Somatoform Disorders Vastly Increase Sick Leave and Work Disability in Primary Care Patients: A Ten-year Follow-up Study

Presenting Author: Per Fink, MD, PhD, DMSc, FAPM

Co-Authors: Morten Fenger-Grøn, Eva Ørnbøl, Mette Rask, Marianne Rosendahl, Flemming Bro

Pre-operative Screening Polysomnogram (PSG) of a Large Cohort of Bariatric Subjects Identifies Three Populations with Distinct Types of Regression of their Apnea-hypopnea Index (AHI) on BMI

Presenting Author: Xavier Preud'homme, MD

Co-Authors: Alfonso Torquati, Ranjan Sudan, Dana Portenier, Andrew Krystal

SESSION E: PSYCHO-ONCOLOGYMurphey II/III

Moderator/Discussant: Rachel Lynn, MD

Treating the 'Difficult to Treat': Outcomes Among Clients with Severe Mental Illness in a Community-based Hepatitis C Treatment and Support Program

Presenting Author: Sanjeev Sockalingam, MD, FRCPC

Co-Authors: Zoe Dodd, Claire Ann Banga, Kate Mason, Jeff Powis

Advanced Cancer as a Risk for Initial Onset and Recurrent Episodes of Major Depression

Presenting Author: Fremonta Meyer, MD

Co-Authors: Kalen Fletcher, Holly Prigerson, Ilana Braun, Paul Maciejewski

Comparison of Psychiatric Medication Use Among Nationally-representative Long-term Cancer Survivors and Controls

Presenting Author: Ilana Braun, MD

Co-Authors: Sowmya Rao, Fremonta Meyer, Giuseppe Fedele

Creating Meaning Following Non-Metastatic Cancer: A Cognitive-Existential Intervention to Improve Existential and Global Quality of Life

Presenting Author: Pierre Gagnon, MD

Co-Authors: Lise Fillion, François Tardif, Jean-Philippe Cochrane, Michèle Aubin, Anne Dagnault, Marie-Claude Blais, Félix Couture, Harvey Max Chochinov

Predicting Depression in Patients Initiating Treatment for Head and Neck Cancer

Presenting Author: William Burke, MD

Co-Authors: Kendra Schmid, William Lydiatt

SESSION F:**SYSTEMS-BASED PRACTICE**Finger Rock II/III

Moderator/Discussant: James Rundell, MD, FAPM

CL Psychiatry as a Teaching Platform for Behavioral Medicine for Advanced Practice Nurses (APNs) and / Physician Assistants (PAs): A Pilot Program

Presenting Author: Leo Pozuelo, MD, FACP, FAPM

Co-Authors: Debra Kangisser, Elias Khawam, Margo Funk, Adele Viguera, Lilian Gonsalves, Kathy Coffman

A Multidisciplinary Curriculum for Mental Health Professionals Working in Primary Care

Presenting Author: Robert Joseph, MD, FAPM

Co-Authors: Jessie Fontanella, Hsiang Huang, Kimberly Leary

Assessing the Quality of Inpatient Psychiatry Consultation-Liaison Services: A Review and Recommendation for Next Steps

Presenting Author: Alexander Thompson, MD

Co-Author: Amelia Dubovsky

Organization of a Multidisciplinary Proactive Consultation Service

Presenting Author: Paul Desan, MD, PhD, FAPM

Co-Authors: Paula Zimbrea, Hochang Lee, William Sledge

The Development of a Competency-based Assessment Rubric to Measure Psychosomatic Medicine Fellow Milestones

Presenting Author: Carrie Ernst, MD

Co-Authors: Catherine Daniels-Brady, Kimberly Klipstein

The Impact of Serious Mental Illness on the Risk of Re-Hospitalization among Patients with Diabetes

Presenting Author: Lydia Chwastiak, MD

Co-Authors: Dmitry Davydow, Christine McKibbin, Ellen Schur, Mason Burley, Michael McDonnell, John Roll, Kenn Daratha

**SESSION G: TRANSPLANT** Sonoran I

Moderator/Discussant: Sheila Jowsey, MD, FAPM

A Matched Comparison Study of Medical and Psychiatric Complications in Methadone-maintained Liver Transplant Recipients: Re-evaluation Nine Years Later

Presenting Author: Robert Weinrieb, MD

Co-Authors: Omair Abbasi, Marlee Madora, Alexandra Leto, Kevin Lynch, George Makar

Does Psychosocial Evaluation of Potential Lung Transplant Candidates Predict Survival after Lung Transplantation?

Presenting Author: Peter Shapiro, MD, FAPM, FAPA

Co-Authors: Yael Holoshitz, David Fedoranko, Eric Peterson, David Lederer

Inflammatory Cytokines and their Association with Depression and Related Symptoms in Liver Transplant Recipients

Presenting Author: Amy Lu, MD Candidate

Co-Authors: Andrea DiMartini, Galen Switzer, Mary Amanda Dew, Francis Lotrich

Quality Improvement Project to Screen and Treat Psychiatric Comorbidities After Liver Transplant

Presenting Author: Shehzad Niazi, MD, FRCPC

Co-Authors: Andrew Keaveney, Adriana Vasquez, Sheila Jowsey, Terry Schneekloth, Teresa Rummans

Systematic Review and Meta-analysis of Psychiatric Distress as a Risk Factor for Morbidity and Mortality in Organ Transplantation

Presenting Author: Mary Amanda Dew, PhD

Co-Authors: Larissa Myaskovsky, Joel Greenhouse, Annette DeVito Dabbs, Galen Switzer, Diana Shellmer, Donna Posluszny, Emily Rosenberger, Jennifer Steel

The Stanford Integrated Psychosocial Assessment for Transplantation (SIPAT): A Prospective Study of Medical & Psychosocial Outcomes of Solid Organ Transplant Recipients

Presenting Author: Jose Maldonado, MD, FAPM

Co-Authors: Yelizaveta Sher, Sermsak Lolak, Heavenly Swendsen, Danica Skibola, Evonne David, Kimberly Standridge, Catherine Sullivan

SESSION H: WEBB FELLOWS Sonoran II

Moderator/Discussant: Michael Sharpe, MD, FAPM



Alcohol Use Disorder Focused Collaborative Care: An MHIP Adventure!

Presenting Author: Shane Coleman, MD



Brief Psychodynamic Therapy for Conversion Disorder (BPCD): A New Treatment Manual

Presenting Author: Anna Dickerman, MD



Street Psychiatry as a Consultation-Liaison Psychiatrist

Presenting Author: Sheryl Fleisch, MD



Valproic Acid as an Adjunct Treatment for Hyperactive Delirium: Postulated Mechanisms of Deliriolytic Action and Case Series

Presenting Author: Yelizaveta Sher, MD

Co-Authors: Jose Maldonado, Anne Catherine Miller, Sermsak Lolak

2011-2012 WEBB FELLOW:

Dr. Park was unable to present her paper at the 2012 Annual Meeting in Atlanta.



Palliative and Supportive Care Needs of Parents with Metastatic Cancer

Presenting Author: Eliza Park, MD

Co-Authors: Devon Check, Deborah Mayer, Katherine Reeder-Hayes, Allison Deal, Justin Yopp, Anna Brandon, Laura Hanson, Donald Rosenstein

◆ 12:40 – 12:55 PM

Break

◆ 1:30 – 5:30 PM

Arizona Sonora Desert Museum Tour (\$45pp).....Meet in hotel lobby



♦ 12:55 – 2:25 PM

Awards/Fellowship LunchArizona Ballroom

Featuring 'lunch with the experts' for trainee and early career attendees.
Selected awards will be presented during the Awards Lunch.

**ELEANOR AND THOMAS P. HACKETT MEMORIAL AWARD**♦ **James Levenson, MD, FAPM**

Professor of Psychiatry, Medicine & Surgery;
Chair, Division of Consultation-Liaison Psychiatry;
Vice-Chair, Department of Psychiatry, Virginia
Commonwealth University, Richmond, VA

WILLIAM L. WEBB FELLOWSHIPPresented by: **Michael Sharpe, MD, FAPM**

Joseph Cerimele, MD
University of Washington
School of Medicine



Jennifer Gatchel, MD, PhD
Massachusetts General
Hospital

Jennifer Kruse, MD
Mayo Clinic



Eric Meyer, MD
University of Texas Health
Science Center at San
Antonio

VISITING C-L PROFESSOR AWARDSPresented by: **James Rundell, MD, FAPM**

**Elisabeth Kunkel, MD,
FAPM**, visiting Fox Chase
Cancer Center,
Philadelphia, PA



**Tomer Levin, MBBS,
FAPM**, visiting Stanford
University, Stanford, CA

DORFMAN JOURNAL PAPER AWARDS

For the best papers published in the Academy's journal,
Psychosomatics

Presented by: **Elisabeth Kunkel, MD, FAPM****Best Case Report: joint winners:**

- ♦ **Inbar Shavit, MD, Thomas Brown, MD**, "Simultaneous Scurvy and Wernicke's Encephalopathy in a Patient with an Ascorbate-Responsive Dyskinesia."
- ♦ **Mark Noble, MS, Christopher Healey, MD, Letitia Danielle McDougal-Chukwumah, MD, Thomas M. Brown, MD**, for "Old Disease, New Look? A First Report of Parkinsonism Due to Scurvy, and of Refeeding-Induced Worsening of Scurvy."

Best Article for Original Research: joint winners:

- ♦ **Julie Adams, MD, Maragatha Kuchibhatla, PhD, Eric Christopher, MD, Jude Alexander, MD, Greg Clary, MD, Michael Cuffe, MD, Robert M. Califf, MD, Ranga Krishnan, MD, Christopher O'Connor, MD, Wei Jiang, MD**, for "Association of Depression and Survival in Patients with Chronic Heart Failure over 12 Years."
- ♦ **Thomas Zaubler, MD, MPH, Kerry Murphy, BA, Lori Rizzuto, LCSW, Rachael Santos, MSN, GNP, Christine Skotzko, MD, Jill Giordano, MA, MSW, Rami Bustami, PhD, MBA, Sharon Inouye, MD, MPH**, for "Quality Improvement and Cost Savings with Multicomponent Delirium Interventions: Replication of the Hospital Elder Life Program in a Community Hospital."

Best Review Article:

- ♦ **Scott Beach, MD, Christopher Celano, MD, Peter Noseworthy, MD, James Januzzi, MD, Jeff Huffman, MD**, for "QTc Prolongation, Torsades de Pointes, and Psychotropic Medications."

Honorable mention:

- ♦ **Elie Isenberg-Grzeda, MD, Haley Kutner, MA, Stephen Nicolson, MD**, for "Wernicke-Korsakoff-Syndrome: Under-Recognized and Under-Treated."

RESEARCH AWARD

♦ **Improving Depression Care in Medical Settings: Is Screening the Answer?**
Brett Thombs, PhD

William Dawson Scholar and Associate Professor,
Faculty of Medicine, McGill University; and
Senior Investigator, Lady Davis Institute for
Medical Research, Jewish General Hospital,
Montreal, QC, Canada

**DISTINGUISHED SERVICE AWARD**

Presented by: Wayne Katon, MD, FAPM



- ◆ **Elisabeth Kunkel, MD, FAPM**
Thomas Jefferson University, Philadelphia, PA

DLIN/FISCHER CLINICAL RESEARCH AWARD

- ◆ **Multiple Medically Unexplained Symptoms and Somatoform Disorders Vastly Increase Sick Leave and Work Disability in Primary Care Patients. A Ten-year Follow-up Study**
Per Fink, MD, PhD, DMSc, FAPM
Aarhus University Hospital, Aarhus, Denmark

ALAN B. STOUDEMIRE AWARD FOR INNOVATION & EXCELLENCE IN C-L EDUCATION

Introduction by: Lois Krahn, MD, FAPM



- ◆ **Disruptions in Development: A Pioneering Course for First-Year Medical Students Taught at the Psychosomatic Interface**
J. Michael Bostwick, MD, FAPM
Mayo Clinic, Rochester, MN

SPECIAL PRESENTATION

Presented by: Wayne Katon, MD, FAPM



- ◆ **Norman Wallis, PhD**
APM Executive Director, 2005-2013

2013 APM FELLOWS

Presented by Wayne Katon, MD, FAPM

Yesne Alici, MD
Andri Andri, MD
Ilana Braun, MD
Christopher Burke, MD
Nancy Byatt, DO, MBA
Lydia Chwastiak, MD, MPH
Thomas Cummings, MD
Talin Dadoyan, MD
Dimitry Davydow, MD

Inna D'Empaire, MD
Mary Amanda Dew, PhD
Tamara Dolenc, MD
Mark Ehrenreich, MD
Rachel Glick, MD
Florina Haimovici, MD
Robert House, MD
Karen Johnson, MD
Lauren Laporta, MD

Sermak Lolak, MD
Michael Marcangelo, MD
Nancy Maruyama, MD
Shehzad Niazi, MD
Robert Oldham, MD, MSHA
Vani Ray, MD
Michelle Riba, MD, MS
Shirlene Sampson, MD, MS
Terry Schneekloth, MD

Gen Shinozaki, MD
Wolfgang Soellner, MD, Prof.
Saba Syed, MD
George Tesar, MD
Jody Underwood, MD
Audrey Walker, MD
Raymond Young, MD
Thomas Zaubler, MD, MPH
Paula Zimbrian, MD

TRAINEE TRAVEL AWARDS

Meredith Cait Brady, MD,
University of California
Kang Won Choi, DO, JD,
MPP, UCSF Fresno
Michael Butterfield, MD,
MSc, Dalhousie University
Katharine Dalke, MD, MBE,
Hospital of the University
of Pennsylvania
Hussam Jefee Bahloul, MD,
Yale University School of
Medicine

Justin Johnson, MD,
Massachusetts General
Hospital
Tiwalola Kolawole, MD,
MetroHealth Medical
Center
David Kroll, MD,
Brigham and Women's
Hospital
Vanessa Lentz, MD, MSc,
University of Toronto

Amy Lu, MD candidate,
University of Pittsburgh
School of Medicine
Laura McLafferty, MD,
Western Psychiatric
Institute and Clinic
Mark Newman, MD,
Northwestern University
Feinberg School of
Medicine

Katie Norfleet, MD,
Psychiatry Residency
Training Program, Seattle
Paul Thisayakorn, MD,
University of Iowa
Hospitals and Clinics

With thanks to the Foundation of the Academy of Psychosomatic Medicine for its support to the William L. Webb Fellowship and Trainee Travel Awards.



♦ 2:25 – 3:25 PM

**Eleanor and Thomas P. Hackett**

Memorial Award [0.75 CME] Arizona Ballroom
 Introduction by: **Daniel Winstead, MD, FAPM**

♦ **A Short History of Time: Psychosomatic Medicine since the Big Bang****James L. Levenson, MD, FAPM**

Professor of Psychiatry, Medicine & Surgery; Chair, Division of Consultation-Liaison Psychiatry;
 Vice-Chair, Department of Psychiatry, Virginia Commonwealth University, Richmond, VA

♦ 3:25 – 3:35 PM

Break

♦ 3:35 – 5:35 PM

8 Concurrent Workshops (W) and Symposia (S) [2.0 CME]
S14: Advances in Medical Care for Patients with Serious Mental Illness Indigo
Track: **PCS** SIG: **COM**

Presenters: **Lydia Chwastiak, MD**, University of Washington School of Medicine, Seattle, WA

Joseph Cerimele, MD, University of Washington, Seattle, WA

Benjamin Druss, MD, Emory University, Atlanta, GA

Oliver Freudenreich, MD, FAPM, Massachusetts General Hospital, Boston, MA

Linda Ganzini, MD, FAPM, Portland VA Medical Center, Portland, OR

S15: Collusions of Silence and Bioethical Dilemmas Unique to HIV Psychiatry - A Joint APM Bioethics and HIV/AIDS SIGs Invited Symposium Verbena
Track: **ETH** SIG: **ETH HIV**

Presenters: **Catherine Harrison-Restelli, MD**, University of Maryland School of Medicine, Baltimore, MD

Mary Ann Cohen, MD, FAPM, Mount Sinai School of Medicine, New York, NY

Suad Kapetanovic, MD, NIH/NIMH, Bethesda, MD

Nicole Mavrides, MD, University of Miami, Miller School of Medicine, Miami, FL

Maryland Pao, MD, FAPM, NIH/NIMH, Bethesda, MD

S16: Is Playing NICE Enough? Lessons Learned in Implementing a Delirium Identification and Prevention Protocol in an Academic and Community Hospital System Murphey II/III
Track: **NEP** SIG: **INT CRI MED NEP**

Presenters: **Thomas Heinrich, MD, FAPM**, Medical College of Wisconsin, Milwaukee, WI

Travis Fisher, MD, Medical College of Wisconsin, Milwaukee, WI

Siddhartha Singh, MD, Medical College of Wisconsin, Milwaukee, WI

Danielle Siclovan, MSN, Froedtert Hospital, Milwaukee, WI

Jeri Smith, APNP, Froedtert Hospital, Milwaukee, WI

S17: Insights into Mood and Obesity: Psychosomatic Perspectives on the Metabolic Continuum Finger Rock II/III
Track: **SUB** SIG: **MED**

Presenters: **Sanjeev Sockalingam, MD, FRCPC**, University Health Network, University of Toronto, Toronto, ON Canada

Weronika Gondek, MD, Primary Care Behavioral Health Collaborative Clinic, Washington, DC

Raed Hawa, MD, University Health Network, University of Toronto, Toronto, ON, Canada

SPECIAL INTEREST GROUPS

Where applicable, sessions with strong interests for APM SIG members have been tagged with the following codes:

ETH Bioethics	EMP Emergency Psychiatry	PED Pediatric Psychosomatic Medicine
CAR Cardiovascular Psychiatry	HIV HIV/AIDS	PSY Psychotherapeutic Approaches to the Medically Ill
COM Community-Based Psychosomatic Physician Practice Issues	INT International Relations	TEL Telepsychiatry
CRI Critical Care	MED Medicine and Psychiatry	TRA Transplant Psychiatry
ECP Early Career Psychiatry	NEP Neuropsychiatry	WOM Women's Health
	PAL Palliative Care	

PROGRAM TRACKS

CAW Child, Adolescent, Women's Health	PCS Collaborative Care in Primary Care Settings	SCS Collaborative Care in Specialty Care Settings	ECP Early Career Psychiatrist	ETH Ethics	NEP Neuropsychiatry	SUB Psychosomatic Medicine's Subspecialties	FUT Psychosomatic Medicine's Future
---	---	---	---	----------------------	-------------------------------	---	---

**S18: Preparing for the 'Silver Tsunami'** Sonoran ITrack: **FUT** SIG: **MED COM****Presenters:** **Yesne Alici, MD**, Memorial Sloan-Kettering Cancer Center, New York, NY**Laura Dunn, MD**, University of California San Francisco, San Francisco, CA**Donald Rosenstein, MD, FAPM**, University of North Carolina Chapel Hill, Chapel Hill, NC**Maria Rueda-Lara, MD**, University of Miami, Miller School of Medicine, Miami, FL**W04: When the Bough Breaks: Identifying and Treating Women Coping with Infertility and Perinatal Loss** Sonoran IITrack: **CAW** SIG: **WOM****Presenters:** **Christina Wichman, DO, FAPM**, Medical College of Wisconsin, Milwaukee, WI**Nancy Byatt, MD**, UMass Memorial Medical Center, Worcester, MA**Nehama Dresner, MD, FAPM**, Northwestern University, Chicago, IL**Florina Haimovici, MD**, Harvard Medical School, Boston, MA**Guittelle St. Victor, MD**, Nassau University Medical Center, East Meadow, NY**W05: Improving Revenue in CL Psychiatry by Accurate CPT Coding** Aster I/IITrack: **SCS** SIG: **COM****Presenters:** **Lawson Wulsin, MD, FAPM**, University of Cincinnati, Cincinnati, OH**Sarah Parsons, DO**, Norton Cancer Institute, Louisville, KY**Junji Takeshita, MD**, University of Hawaii, Honolulu, HI**Chris White, MD, JD, FAPM**, University of Cincinnati, Cincinnati, OH**W06: Clinical Challenges for the Early Career Consultation Psychiatrist: When Your Peers Are the Obstacle** LantanaTrack: **ECP** SIG: **ECP****Presenters:** **Stephen Nicolson, MD, FAPM**, Vanderbilt School of Medicine, Nashville, TN**Sheryl Fleisch, MD**, Vanderbilt University Medical Center, Nashville, TN**Vidya Raj, MD**, Vanderbilt University Medical Center, Nashville, TN**Ama Rowe, MD**, Vanderbilt University Medical Center, Nashville, TN**Jo Ellen Wilson, MD**, Vanderbilt University Medical Center, Nashville, TN

◆ 5:00 – 7:00 PM

APM Happy Hour Lobby Lounge
Present your APM badge in the AZUL Lounge for discounts

◆ 5:00 – 8:00 PM

Exhibits Breakdown Arizona Foyer

◆ 5:40 – 6:30 PM

Meet the Experts Q&A: DSM-5 Somatic Symptom Disorders Arizona Ballroom
Moderator: **Wayne Katon, MD, FAPM****Joel Dimsdale, MD**, University of California, San Diego, CA**James Levenson, MD, FAPM**, Virginia Commonwealth University, Richmond, VA**Michael Sharpe, MD, FAPM**, Oxford University, Oxford, UK**Lawson Wulsin, MD, FAPM**, University of Cincinnati, Cincinnati, OH

◆ 6:30 – 8:00 PM

fAPM Stargazing, with a light southwestern-style dinner served with Margarita Tasting, Entertainment, Auction and Raffle. Astronomers and telescopes will be available.

Proceeds support the fAPM (\$75pp)..... Arizona Foyer & Deck


◆ 8:00 PM – late

**University of Arizona, Department of Psychiatry Jazz Reception
Light snacks, cash bar, entertainment**

Complimentary for all attendees..... Fiesta Area near G buildings



◆ 6:15 – 7:00 AM	Mindfulness Meditation with Paul Jones, MD Ironwood
◆ 6:15 – 7:00 AM	Neighborhood RunMeet in hotel lobby
◆ 6:30 AM – 7:00 PM	Registration Desk OpenArizona Reg Desk 1
◆ 7:00 – 8:30 AM	General Hospital Psychiatry Editorial Board Meeting (by invitation) Cottonwood
◆ 7:00 – 8:00 AM	APM Special Interest Group Meetings See page 29 Continental breakfast served for SIG members
◆ 8:00 – 9:00 AM	APM Committee Meetings See page 29 Continental breakfast served for committee members
◆ 9:00 – 9:15 AM	Light Refreshments Arizona Foyer
◆ 9:15 – 9:30 AM	Announcements Arizona Ballroom

◆ 9:30 – 10:30 AM	 Dlin/Fischer Clinical Research Award Lecture [1.0 CME]Arizona Ballroom Introduction by: Michael Sharpe, MD, FAPM ◆ Multiple Medically Unexplained Symptoms and Somatoform Disorders Vastly Increase Sick Leave and Work Disability in Primary Care Patients. A Ten-year Follow-up Study Per Fink, MD, PhD, DMSc, FAPM, Aarhus University Hospital, Aarhus, Denmark
-------------------	--

◆ 10:30 – 10:45 AM **Break**

◆ 10:45 AM – 12:45 PM **8 Concurrent Workshops (W) and Symposia (S) [2.0 CME]**

S19: Child Psychiatric Emergencies: What Brings Children with Acute Mental Illness to Emergency Rooms, and What Should We Do With Them Once They Get There..... Lantana

Track: **CAW** SIG: **PED**

Presenters: Leslie Zun, MD, Mt Sinai Hospital, Chicago, IL
 Daphne Korczak, MD, Hospital for Sick Children, Toronto, ON, Canada
 Laura Markley, MD, Akron's Children's Hospital, Akron, OH
 Maryland Pao, MD, FAPM, NIH/NIMH, Bethesda, MD
 Laura Prager, MD, Massachusetts General Hospital, Boston, MA
 Sandra Rackley, MD, Children's National Medical Center, Washington, DC

S20: International Approaches to HIV Psychiatric Care in the Ambulatory Setting - An HIV/AIDS SIG-sponsored Symposium..... Indigo

Track: **SCS** SIG: **HIV COM MED INT**

Presenters: James Bourgeois, OD, MD, FAPM, University of California San Francisco, San Francisco CA
 Jordi Blanch, MD, PhD, Hospital Clinic, Barcelona, Spain
 Mary Ann Cohen, MD, FAPM, Mount Sinai School of Medicine, New York, NY
 Adriana Carvalhal, MD, University of Toronto, Toronto, ON, Canada
 John Grimaldi, MD, Brigham and Women's Hospital, Boston, MA

S21: Effective Communication within the Psychiatry Consult-Liaison (C-L) Team and Among C-L Psychiatrists and Medical and Surgical Services..... Verbena

Track: **ECP** SIG: **ECP**

Presenters: Theodore Stern, MD, FAPM, Massachusetts General Hospital, Boston, MA
 Madeleine Becker, MD, FAPM, Thomas Jefferson University Hospital, Philadelphia, PA
 Robert Boland, MD, FAPM, Brown University Psychiatry Program, Providence, RI
 Jason Caplan, MD, FAPM, Creighton University School of Medicine at St. Joseph's Hospital and Medical Center, Phoenix, AZ
 Ellen Coffey, MD, Hennepin County Medical Center, Minneapolis, MN
 Jennifer Gatchel, MD, PhD, Massachusetts General Hospital/McLean Hospital, Boston, MA

S22: Updates in Neuropsychiatry 2013..... Sonoran II

Track: **NEP** SIG: **MED NEP**

Presenters: Jose Maldonado, MD, FAPM, Stanford University, Stanford, CA
 Lawrence McGlynn, MD, Stanford University, Stanford, CA
 Yelizaveta Sher, MD, Stanford University, Stanford, CA
 Diana Wertz, MD, Stanford University, Stanford, CA



W07: Using Telepsychiatry to Deliver Psychiatric Consultation and Treatment as Part of an Integrated Care Model Finger Rock II/III

Track: **PCS** SIG: **COM TEL**

Presenters: **Terry Rabinowitz, MD, DDS, FAPM**, University of Vermont College of Medicine/Fletcher Allen Health Care, Burlington, VT
Nina Antoniotti, MD, Marshfield Clinic, Marshfield, WI
Nanette Concotelli-Fisk, MD, University of New Mexico, Albuquerque, NM
M. Cornelia Cremens, MD, Harvard Medical School/Massachusetts General Hospital, Boston, MA
Felissa Goldstein, MD, Marcus Autism Center, Atlanta, GA
Elizabeth Krupinski, MD, University of Arizona, Tucson, AZ
Carol Larroque, MD, University of New Mexico, Albuquerque, NM
Megan Olden, MD, Weill Cornell Medical College, New York, NY
Thomas Sheeran, MD, Rhode Island Hospital/The Warren Alpert Medical School of Brown University, Providence, RI

W08: Good Grief: The Role of Psychosomatic Medicine Supporting Death and Dying in Different Settings Sonoran I

Track: **ETH** SIG: **PAL**

Presenters: **Stephanie Cheung, MD**, Columbia University Medical Center, New York, NY
Amy Christianson, MD, Cedars-Sinai Medical Center, University of California Los Angeles, Los Angeles, CA
Susan Turkel, MD, FAPM, Children's Hospital Los Angeles, Keck School of Medicine, University of Southern California, Los Angeles, CA

W09: Risk of Torsades de Pointes in Patients with Pacemakers and ICDs:

'Don't Worry About it'? Aster I/II

Track: **SUB** SIG: **CAR CRI**

Presenters: **Margo Funk, MD**, Cleveland Clinic Foundation, Cleveland, OH
Jun Yang Lou, MD, Cleveland Clinic Foundation, Cleveland, OH
Archana Brojmohun, MD, Cleveland Clinic Foundation - Ashtabula County Medical Center, Ashtabula, OH

W10: A Critical Review of Recent Research Findings Relevant to Your Practice: A Research Committee Workshop Murphey II/III

Track: **FUT** SIG: **MED ECP NEP COM**

Presenters: **Michael Sharpe, MD, FAPM**, University of Oxford, Oxford, UK
Philip Bialer, MD, FAPM, Memorial Sloan-Kettering Cancer Center, New York, NY
Jeff Huffman, MD, FAPM, Harvard Medical School, Boston, MA
Jose Maldonado, MD, FAPM, Stanford University, Stanford, CA
Gen Shinozaki, MD, University of Iowa, Iowa City, IA

- ◆ 12:00 noon – 5:00 PM **fAPM Golf Benefit** La Paloma Country Club Shop
 Proceeds support the fAPM (\$200pp + \$50 for clubs)
- ◆ 12:45 – 1:45 PM **Lunch on Your Own**
- ◆ 12:45 – 2:15 PM **SIG Chair's Lunch** (with Council representatives) Canyon II
- ◆ 12:45 – 2:15 PM **Optional Trainee & Early Career Lunch** (\$10pp) Canyon II
 Career development round-table discussions; trainee and early career attendees only
- ◆ 2:15 – 2:30 PM **Break** Terrace Foyer

PROGRAM TRACKS

CAW Child, Adolescent, Women's Health	PCS Collaborative Care in Primary Care Settings	SCS Collaborative Care in Specialty Care Settings	ECP Early Career Psychiatrist	ETH Ethics	NEP Neuropsychiatry	SUB Psychosomatic Medicine's Subspecialties	FUT Psychosomatic Medicine's Future
--	--	--	---	----------------------	-------------------------------	---	---



♦ 2:30 – 4:30 PM

4 Concurrent Workshops (W) and Symposia (S) [2.0 CME]

S23: New Models for Consultation-Liaison Psychiatry in the Era of Health Care Reform: The Embedded Psychiatrist Indigo
Track: **PCS** SIG: **COM**

Chair and Moderator: Philip Muskin, MD, FAPM, Columbia University, New York, NY

Presenters: Anne Skomorowsky, MD, Columbia University, New York, NY

Stephanie Cheung, MD, Columbia University, New York, NY

Laura Kent, MD, Columbia University, New York, NY

Nancy Needell, MD, Cornell University, New York, NY

S24: Agitation, Delirium & Other Things That 'Go Bump in the Night in the Medicine Ward' ... Verbena
Track: **NEP** SIG: **MED NEP**

Presenters: Jose Maldonado, MD, FAPM, Stanford University, Stanford, CA

J.J. Rasimas, MD, PhD, FAPM, NIH/NIMH, Bethesda, MD

Yelizaveta Sher, MD, Stanford University, Stanford, CA

S25: Psychonephrology: Challenges and Opportunities When Caring for Patients with Chronic Kidney Disease Lantana
Track: **SUB** SIG: **TRA MED**

Presenters: Marta Novak, MD, PhD, FRCPC, University of Toronto, Toronto, ON, Canada

Susan Abbey, MD, FRCPC, University Health Network, Toronto, ON, Canada

Istvan Mucsi, MD, PhD, McGill University Health Center, Montreal, QC, Canada

Sanjeev Sockalingam, MD, FRCPC, University Health Network, Toronto, ON, Canada

W11: Where Health Care Reform & Consultation Collide: The Emergency Department.
A Joint Workshop of the Emergency Psychiatry SIG and the American Association for Emergency Psychiatry Aster I/II
Track: **SCS** SIG: **COM EMP**

Presenters: Victor Stiebel, MD, FAPM, University of Pittsburgh Medical School, Pittsburgh, PA

David Gitlin, MD, FAPM, Brigham and Woman's Hospital, Boston, MA

Rachel Lipson-Glick, MD, University of Michigan Medical School, Ann Arbor, MI

Cheryl McCullumsmith, MD, PhD, UAB School of Medicine, Birmingham, AL

Leslie Zun, MD, Chicago Medical School, Chicago, IL

♦ 3:30 – 4:30 PM

fAPM 5k Run/2k Walk Meet at fountain outside lobby
Proceeds support the fAPM (\$30pp)

♦ 4:30 – 4:45 PM

Break

♦ 4:45 – 5:30 PM

APM Annual Business Meeting (APM members only) Canyon II

♦ 5:30 – 6:30 PM

Annual Meeting Committee Wrap-up Meeting Sonoran I
Program committee/subcommittee members only

♦ 5:00 – 7:00 PM

APM Happy Hour Lobby Lounge
Present your APM badge in the AZUL Lounge for discounts

♦ 7:00 – 10:00 AM

Registration Desk Open Arizona Reg Desk 1

♦ 7:30 – 10:30 AM

Second Council Meeting (Council members & invited guests) Lantana



Wednesday, November 12

5:00 – 6:00 PMArizona Deck
Trainee & Early Career Mixer
Trainee and early career attendees only

5:00 – 7:00 PMLobby Lounge
APM Happy Hour (Present your APM badge in the AZUL Lounge for discounts)

6:00 – 7:00 PMArizona Deck
New Member, First Time Attendee Reception
(by invitation)

6:00 – 9:00 PMTennis Center
fAPM Tennis Benefit; proceeds support the fAPM (\$45pp)

Thursday, November 13

5:00 – 7:00 PMLobby Lounge
APM Happy Hour (Present your APM badge in the AZUL Lounge for discounts)

6:30 – 8:30 PMArizona Foyer
Welcome Reception



Local Attractions/Dining

The hotel operates a regular, complimentary shuttle to La Encantada (www.laencantadashoppingcenter.com), an upscale, outdoor shopping center located just 5 mins from the hotel. Besides an extensive range of shops the center has several excellent dining options. The hotel will be operating a shuttle service every 30 mins during peak times in the evenings to accommodate attendees who wish to dine off property.

Further Tourism Guidance

Tucson's vibrant Downtown is 11 miles from the hotel. If you are interested in planning a visit, this excellent website provides details of the area and a schedule of events:

www.downtowntucson.org

For general tourism information, the Tucson Convention & Visitors Bureau provide this website: www.visittucson.org

Friday, November 14

1:30 – 5:30 PM Meet in hotel lobby
Arizona Sonora Desert Museum Tour (\$45pp)

The Arizona Sonora Desert Museum is considered a world-class natural history museum and is one of Tucson's best loved treasures. Noted as 'the most distinctive zoo in the United States', it is a combination zoological park, natural history museum and botanical garden. Our tour guide will escort you through the museum where you'll experience a variety of exhibits that re-create the natural landscape of the Sonoran Desert Region, including Cat Canyon and its remarkable glass partition, allowing close viewing of the Mountain Lions. Other displays include Prairie Dogs, Gila Monsters, and a Humming Bird aviary. A 'life underground' exhibit features desert animals such as Kit Foxes, Kangaroo Rats, Ringtails, Tarantulas and a variety of snakes that only appear at night during the desert summer after the ground has cooled.

Transportation departs the hotel lobby promptly at 1:30 PM. Dress: comfortable walking shoes, sunglasses, sunhat, sunscreen, shorts are OK. Although daytime temperatures in November are roughly 50-70°, this is a walking tour, so please prepare accordingly. Water is provided; lunch is not provided, so ensure you have eaten before leaving on the tour. Return time is approximate.

5:00 – 7:00 PMLobby Lounge
APM Happy Hour (Present your APM badge in the AZUL Lounge for discounts)

6:30 – 8:00 PM
fAPM Stargazing, with a light southwestern-style dinner served with Margarita Tasting, Entertainment, Auction and Raffle.
Astronomers and telescopes will be available.
Proceeds support the fAPM (\$75pp)

8:00 PM – late.....Fiesta Area
University of Arizona, Department of Psychiatry Jazz Reception

Light snacks, cash bar, entertainment; complimentary for all attendees

Saturday, November 15

12:00 noon – 5:00 PMLa Paloma Country Club Shop
fAPM Golf Benefit
Proceeds support the fAPM (\$200pp + \$50 for clubs)

3:30 – 4:30 PM Meet at fountain outside lobby
fAPM 5k Run/2k Walk
Proceeds support the fAPM (\$30pp)

5:00 – 7:00 PMLobby Lounge
APM Happy Hour (Present your APM badge in the AZUL Lounge for discounts)

COMMITTEE/SIG MEETINGS

(Subject to modification)



APM2013

On each morning, a continental breakfast will be available in both the Terrace Foyer and Finger Rock Foyer (for committee/SIG members only wearing official APM identification).

Thursday, November 14

Room	07:00 – 08:00 AM: Committees	08:00 – 09:00 AM: Committees
Aster I	Business of PM Subcommittee	Guidelines/Evidence Based Medicine Subcommittee
Aster II	Fellowship Recruitment Task Force	Strategic Health Reform Task Force
Finger Rock III	Early Career Psychiatrists SIG	Local Arrangements Subcommittee
Indigo	Medical Student Education Subcommittee	Fellowship Education Subcommittee
Lantana	Fellowship and Awards Subcommittee	Member Services Subcommittee
Murphey II	Nomination and Leadership Committee	Research & Evidence Based Practice Committee
Murphey III	Pre-Conference Course Subcommittee	Early Career Subcommittee
Verbena	Constitution and Bylaws Subcommittee	Standards and Ethics Subcommittee

Friday, November 15

Room	07:00 – 08:00 AM: Committees	08:00 – 09:00 AM: SIGs
Aster I		Emergency Psychiatry
Aster II	Interdisciplinary Education Subcommittee	Neuropsychiatry
Finger Rock III		Women's Health
Indigo	Residency Education Subcommittee	Cardiovascular Psychiatry
Lantana	Strategic Planning Committee	HIV/AIDS
Murphey II	Oral Papers and Posters Subcommittee	Palliative Care
Murphey III	Workshops and Symposia Subcommittee	Telepsychiatry
Verbena	Maintenance of Certification Subcommittee	Critical Care

Saturday, November 16

Room	07:00 – 08:00 AM: SIGs	08:00 – 09:00 AM: Committees
Aster I	Pediatric Psychosomatic Medicine	Finance Committee
Aster II	Medicine and Psychiatry	Communications Committee
Finger Rock III	Women's Caucus	
Indigo	Community-Based Psychosomatic Physician Practice Issues	Education Committee
Lantana	International Relations	Membership Committee
Murphey II	Psychotherapeutic Approaches to the Medically Ill	Annual Program Committee
Murphey III	Transplant Psychiatry	
Verbena	Bioethics	Governance Committee

MISSED A SESSION?

WANT TO REVIEW A
PARTICULAR PRESENTATION?

EXPERIENCE THE
2013 APM ANNUAL MEETING
ONLINE THROUGH THE
APM LIVE LEARNING CENTER

Carefully selected sessions from this conference are being recorded and will be available online for all your professional development needs. Recorded sessions make great training tools for you and your colleagues and keep you at the forefront of your industry.

You will be notified via email when sessions have been posted online.

APM.sclivelearningcenter.com



ACADEMY OF PSYCHOSOMATIC MEDICINE
LIVE LEARNING CENTER



—Supporting the Mission of the Academy of Psychosomatic Medicine

In June 2009, the APM Council created a 501(c) (3) charitable, education, and scientific foundation with the primary purpose of supporting the Academy's education and research programs and activities through fundraising. This new organization is called the Foundation of the Academy of Psychosomatic Medicine (fAPM).

Fundraising

During the APM annual meetings beginning in 2009, live and silent auctions were held to help raise money for the Foundation. The activities were a success and we thank our members for their support.

At this year's annual meeting, the Foundation will present an auction and raffle during the Friday evening Stargazing and Margarita Party. In addition, the Foundation will sponsor tennis, golf and a 5K run / 2K walk all to be held at the resort. All net proceeds will support the Foundation. Please register and join us at these events.

Educational Mission

One of the educational missions of the APM is to foster the development of exceptional early-career PM psychiatrists via the William Logan Webb Fellowship. Donations to the Foundation will serve to support the Webb Fellowship and the Trainee Travel awards. These awards create opportunities that would not otherwise exist for members-in-training to participate at APM annual meetings and in APM activities.

Donations

Both the Academy and the Foundation thank you for your generous contribution and support. A donation of \$500 or more automatically enrolls you in the fAPM Presidents Club.

Donations may be made by completing the donation form on the next page and:

- Faxing it to 312-277-3560, or
- Scan and email to: fapminfo@gmail.com, or
- Dropping it off at the Foundation booth in the registration area

You may also donate online to the Foundation via PayPal (account not required). Visit the Foundation at apm.org/foundation for details.

The Foundation's Board of Directors

Philip Muskin, MD, FAPM, Chair
Daniel Winstead, MD, FAPM, Vice Chair
Carol Alter, MD, FAPM, Secretary/Treasurer
Robert Boland, MD, FAPM, APM Council Representative

Nehama Dresner, MD, FAPM
John Hayes, MD, FAPM
James Levenson, MD, FAPM
Donald Rosenstein, MD, FAPM, ex officio

fAPM DONATION FORM



Foundation Contact:

Debbie Schneider (fapminfo@gmail.com)
apm.org/foundation

First Name	M.I.	Last Name
Street Address		
City	State	Zip/Postal Code
Country	Telephone	
Email address	Fax number	

Check Amount \$ _____

Credit Card Amount in US Funds \$ _____

Credit Card Number (Visa, MC, Amex) _____

/
Exp. Date

Security Code

Name on Card

Signature

Is the donation in honor of someone? If so, please fill out the following section:

Name of honoree _____

Occasion (Optional) _____

Address where the acknowledgement will be sent:

Donations may be made by completing this donation form and:

- Faxing it to 312-277-3560, or
- Scan and email to: fapminfo@gmail.com, or
- Dropping it off at the Foundation booth in the registration area

You may also donate online to the Foundation via PayPal (account not required). Visit the Foundation at apm.org/foundation for details.

3rd Annual Scientific Conference of the European Association of Psychosomatic Medicine (EAPM)

EAPM 2015

Challenges and Chances
for Psychosomatic Medicine in Health Care

July 2nd – 4th 2015 | Nuremberg, Germany



EAPM 2015 • ANNOUNCEMENT

3rd Annual Scientific Conference of the
European Association of Psychosomatic Medicine (EAPM)

Challenges and Chances for Psychosomatic Medicine in Health Care

European Association of Psychosomatic Medicine (EAPM)

The EAPM was founded in 2012 after the unification of the European Network of Psychosomatic Medicine and the European Association of Consultation-Liaison Psychiatry and Psychosomatics (EACLPP). Previously these two organisations organized the biannual European Conference on Psychosomatic Research.

Become a member of the EAPM

- to participate in scientific work groups and special interest groups
- to receive reduced congress fees
- to benefit of an online-subscription to the Journal of Psychosomatic Research
- visit the website of EAPM: www.eapm.eu.com

2015 EAPM Annual Scientific Conference

Congress president: Wolfgang Söllner

Deadline for Abstract submission: January 15, 2015

Congress website: www.eapm2015.com

Image: ©Tourist office Nuremberg, Uli Kowatsch

I am delighted to announce the second conference of the European Association of Psychosomatic Medicine (EAPM) in Sibiu, Romania, 25-28 June 2014.

This meeting will bring together an international, multi-professional line up of physicians, psychiatrists and psychologists to explore the latest advances in psychosomatic medicine and consultation liaison psychiatry.

The program covers a diverse range of subjects: psychosomatic medicine and cultural changes, psychosomatics in the elderly population, the brain-gut axis and psychosomatics in gastroenterology. We welcome abstracts on a wide range of subjects for the scientific symposia and poster sessions.

The location for our conference this year is the city Sibiu, in Romania. This central European city is 800 years old and was Cultural Capital of Europe in 2007. It is easy to travel to Sibiu by airplane, train or even by car. The venue is Ramada Hotel, just downtown. Some meetings will be accommodated in the neighbored rooms of the University Lucian Blaga.

I look forward to seeing you all in Sibiu in June 2014!

Yours sincerely



Prof. Wolfgang Söllner.

President EAPM

Prof., M.D.

General Hospital Nuremberg Germany
Psychosomatic Medicine and
Psychotherapy

EAPM

European Association
of Psychosomatic Medicine



UMF
UNIVERSITATEA DE
MEDICINA ŞI FARMACIE
"ALEXANDRU I. CUZA" IAI
IILA-KAPICA



ULBS
Universitatea "Lucian Blaga" Sibiu



**EAPM
2014**

CARE AND CURE
AN INTEGRATED APPROACH
TO PSYCHOSOMATIC MEDICINE

ANNUAL MEETING OF THE
EUROPEAN ASSOCIATION
OF PSYCHOSOMATIC MEDICINE
SIBIU, ROMANIA, 25th-28th OF JUNE

Chairman:

Dan L. Dumitrascu

Chairman of the Organizing Committee:

Paul J. Porr

Topics:

1. Psychosomatic Medicine and cultural change
2. Psychosomatics in the elderly population
3. Brain-gut axis and the psychosomatics in gastroenterology:

Keynote speakers:

Douglas Drossman (Chapel Hill)
Karl-Heinz Ladwig (Munich)
Gabriele Moser (Vienna)
Marta Novak (Budapest)
Joris Slaets (Groningen)
Paul Summergrad (Boston)

CONGRESS INFORMATION

CONGRESS SITE:

<http://eapm2014.medical-congresses.ro>

IMPORTANT DEADLINES:

- Abstract submission deadline: 31st of January, 2014
- Early birds registration: 30th of March, 2014

ACCOMMODATION:

- <http://eapm2014.medical-congresses.ro/HotelBooking>

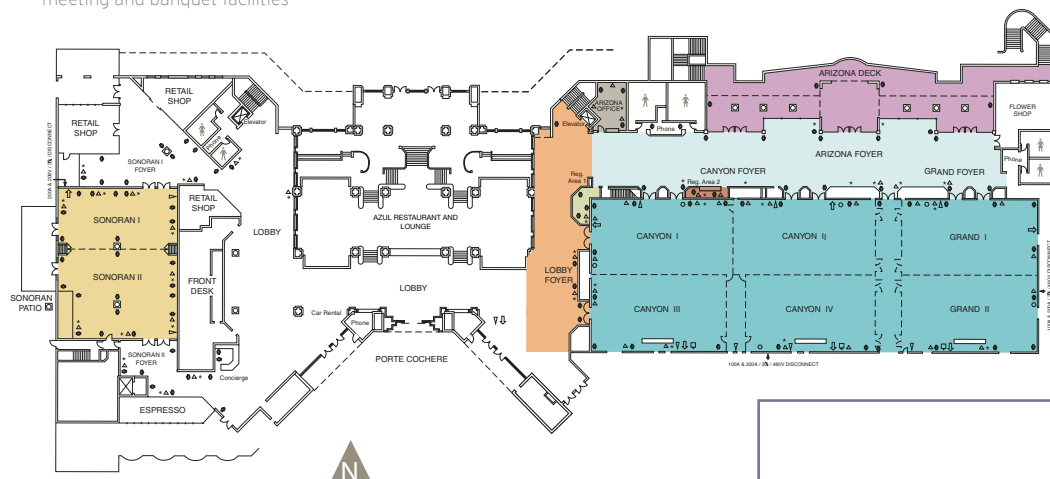
REGISTRATION:

All participants are required to register for the conference. Please register online via the congress site.

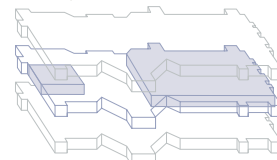
E-mail: eapm2014@pproevents.com, Telephone: +40 264 438887



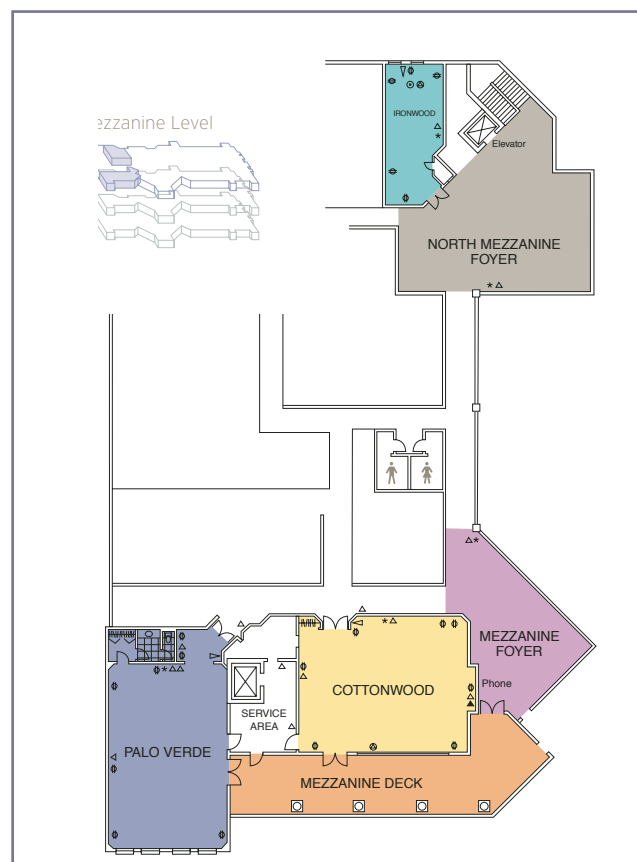
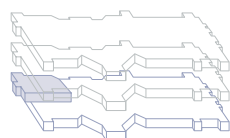
meeting and banquet facilities



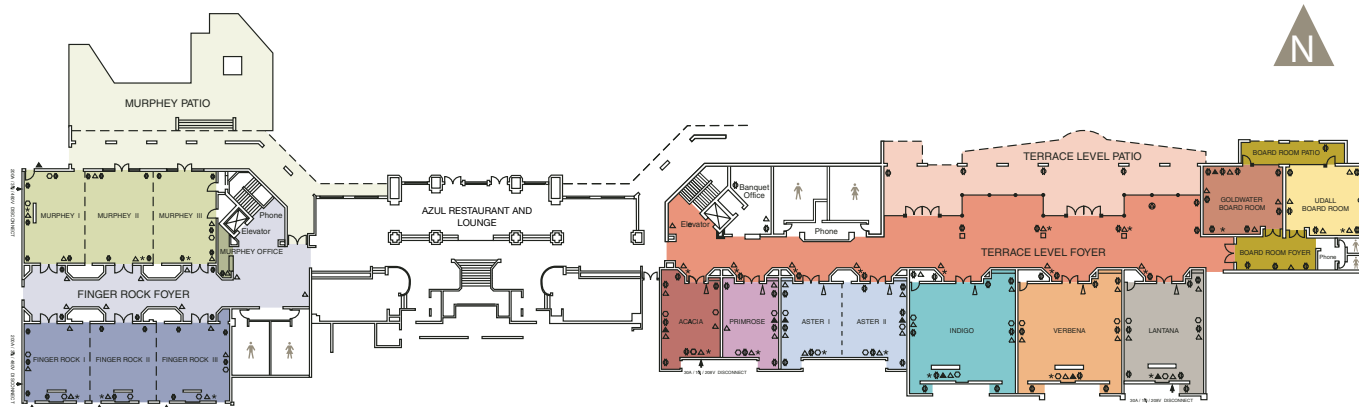
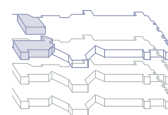
lobby level



terrace level west



mezzanine level



Covers in separate file because
of pocket on inside back cover



Membership Has its Benefits!

JOIN APM NOW!



Since 1954, the Academy of Psychosomatic Medicine has served as a meeting ground for collaboration and exchange of knowledge and ideas in the field of psychosomatic medicine and consultation-liaison (C-L) psychiatry. We welcome and encourage professionals and trainees with an interest in consultation-liaison psychiatry/psychosomatic medicine to become a member of the APM. For membership details, please visit www.apm.org to join and start receiving some of the great membership benefits listed below.

AS A MEMBER YOU RECEIVE THE FOLLOWING:

- A subscription to our premier medical journal, *Psychosomatics*, online access to two additional related journals, and 25% discount on selected books published by Elsevier, Inc.
- An annual scientific meeting. Members save over 25% on annual meeting registration fees.
- Introduction to and interaction with special interest groups.
- Opportunities to participate in the Academy's committee structure.
- A distinguished Fellowship and awards program.
- The Academy's newsletter.
- Increase your knowledge & network with your peers and leaders in the field of Psychosomatic Medicine.

Interested in joining? Please speak with a member of staff at the registration desk.



APM is pleased to welcome to this year's meeting the following companies as exhibitors:

23rd World Congress on Psychosomatic Medicine, Glasgow, UK
American Board of Psychiatry and Neurology, Buffalo Grove, IL
American Psychiatric Publishing, Arlington, VA
Elsevier, Maryland Heights, MO (publishers of the Academy's journal)
Tamber Health, Plymouth, MN

APM Thanks

The University of Arizona, Department of Psychiatry for hosting the Friday night Jazz Reception

APM 2013 mobile web app

Bookmark the site on your smartphone or tablet by visiting apm2013.sched.org/mobile

APM's 2013 annual meeting mobile web app will help you plan your schedule, connect with fellow meeting attendees, and view session details on the go, including session abstracts and speaker biographies.

apm2013.sched.org/mobile

Join us next year!

61ST
ANNUAL
MEETING

FORT LAUDERDALE
FLORIDA
MARRIOTT HARBOR
BEACH RESORT & SPA

12-15
NOVEMBER
2014

*Lessons from Our Best Teachers: Patient-informed Advances
in Clinical Care, Research, and Leadership*



ACADEMY OF
PSYCHOSOMATIC
MEDICINE